

PEPPERGUM WOODLAND (TERRESTRIAL AREA 2)

Scientific Name	Common Name	Size (h x w)	Planting Density (plants/m ²)	Quantity/ha
<i>Eucalyptus radiata</i>	Narrow - leaf poppermint	10-30 x 6-20	0.05	150
<i>Banksia marginata</i>	Silver Banksia	1-10 x 1-5	0.12	1200
<i>Kunzea ericoides</i>	Burgan	2-5 x 2-4	0.12	1200
<i>Hoovea heterophylla</i>	Common Hoovea	0.3-0.6 x 0.3-1	0.05	500
<i>Acrotriche serrulata</i>	Honey-pots	0.1-0.3 x 0.5-1	0.02	200
<i>Themedia triandra</i>	Kangaroo Grass	0.4-0.75 x 0.7-0.9	0.1	1000
<i>Xanthorrhoea minor</i> ssp. <i>Lutea</i>	Small Grass Tree	0.6 x 1	0.05	500
<i>Leptosperma filiforme</i>	Common Rubber-Sedge	to 0.9 high	0.05	500
<i>Cassytha glabella</i>	Slender Dodder-Laurel		0.1	1000

SWAMP GUM AND MEALY STRINGYBARK WOODLAND (TERRESTRIAL AREA 2)

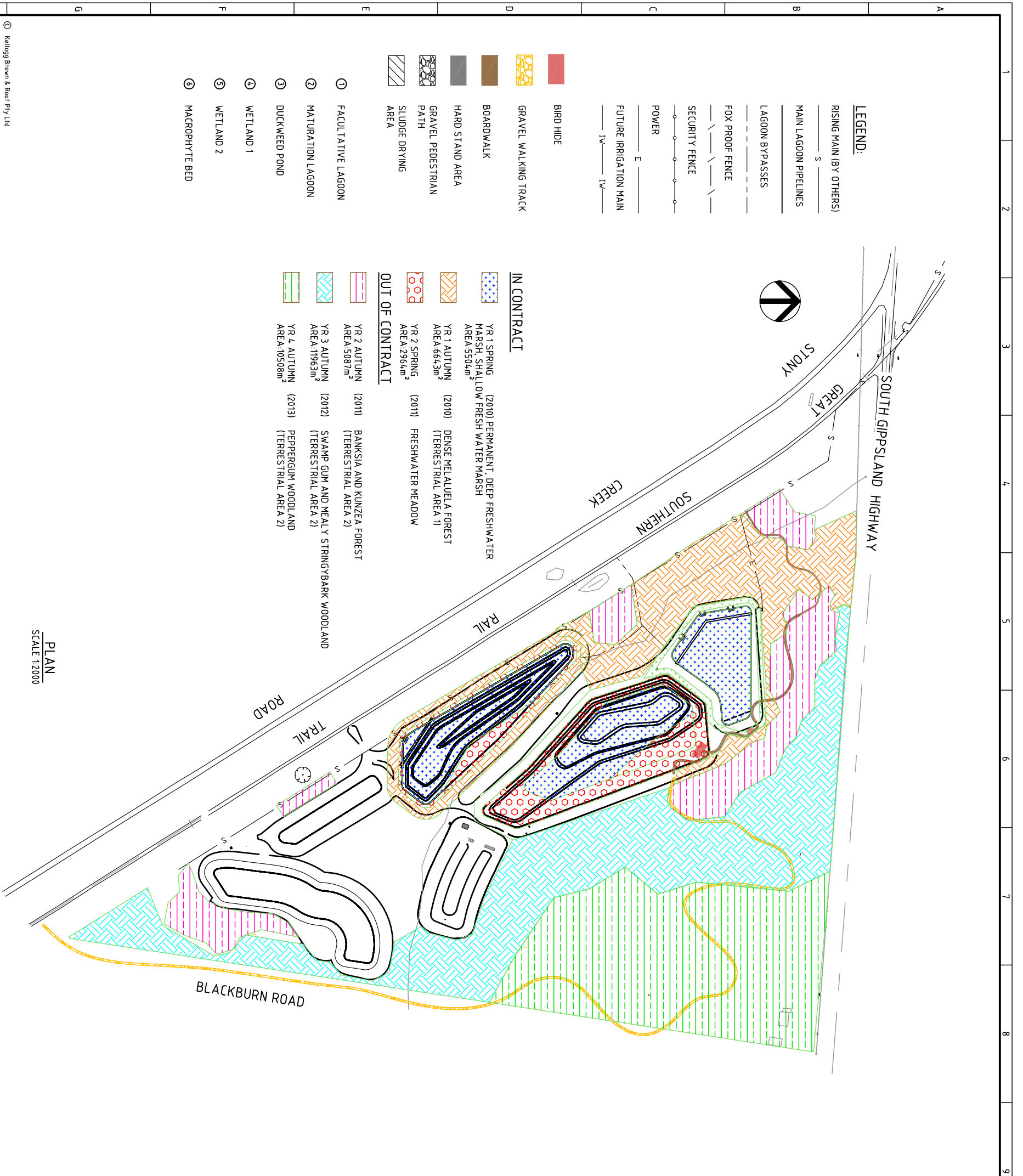
Scientific Name	Common Name	Planting Density (plants/m ²)	Quantity/ha
<i>Leptosperma contortum</i> ssp. <i>hiale</i>	Pickety Tea Tree	0.04	400
<i>Eucalyptus ovata</i>	Mealy Stringybark	0.05	500
<i>Epacris impressa</i>	Swamp Gum	0.05	500
<i>Banksia marginata</i>	Silver Banksia	0.12	1200
<i>Kunzea ericoides</i>	Burgan	0.12	1200
<i>Hibbertia riparia</i>	Erect Gunia flower	0.05	500
<i>Hoovea heterophylla</i>	Common Hoovea	0.05	500
<i>Acrotriche serrulata</i>	Honey-pots	0.02	200
<i>Gonocarpus tetragynus</i>	Common Rapoport	0.05	500
<i>Ymenaea triandra</i>	Kangaroo Grass	0.15	1500
<i>Xanthorrhoea minor</i> ssp. <i>Lutea</i>	Small Grass Tree	0.15	1500
<i>Leptosperma filiforme</i>	Common Rubber-Sedge	0.15	1500
<i>Pteridium esculentum</i>	Austral Bracken	0.05	500
<i>Cassytha glabella</i>	Slender Dodder-Laurel	0.1	1000

DENSE MELALUELA FOREST (TERRESTRIAL AREA 1)

Scientific Name	Common Name	Size (h x w)	Planting Density (plants/m ²)	Quantity/ha
<i>Leptospernum lanigerum</i>	Wooly Tea Tree	2-6 x 1-3	0.05	500
<i>Healoea ericoides</i>	Swamp Paperbark	2-9 x 3	0.05	500
<i>Leptospernum contortum</i> ssp. <i>hiale</i>	Pickety Tea Tree	1-4 x 1-2	0.04	400
<i>Lycopodium australe</i>	Australian Spinywort	to 1 m	0.05	500
<i>Lythrum salicaria</i>	Purple Loosestrife	1-2 x 1	0.05	500
<i>Pereskia praeartemissa</i>	Spotted Knotweed		3	3000
<i>Stellaria angustifolia</i>	Swamp Starwort	spreading to 1.2	0.15	1500
<i>Lobelia eriocha</i>	Angled Lobelia	0.1-0.3	0.05	500
<i>Cassia hirsuta</i>	Swamp Cassia	0.1-0.3	0.05	500
<i>Crucifera sp.</i>	Swamp Crucifera	0.3 x 0.8-1.5	9	9000
<i>Poa sp.</i>	Poa	0.3 x 0.8	7	7000
<i>Banania rubiginosa</i>	Soft Twig Bush	1.0 - 4.0	7	7000
<i>Calystegia sepium</i>	Large Bindweed	2-5 x 2-4	0.02	200
<i>Kunzea ericoides</i>	Burgan	1.0 - 4.0	0.12	1200
<i>Leptosperma filiforme</i>	Common Rubber-Sedge	to 0.9 high	0.1	1000

BANKSIA AND KUNZEA FOREST (TERRESTRIAL AREA 2)

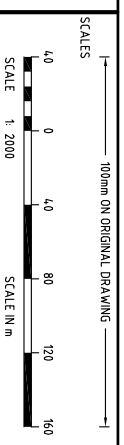
Scientific Name	Common Name	Size (h x w)	Planting Density (plants/m ²)	Quantity/ha
<i>Coprosma quadrifida</i>	Pickety current bush	2-4 x 1-1.5	0.04	400
<i>Leptospernum contortum</i> ssp. <i>hiale</i>	Pickety Tea Tree	1-4 x 1-2	0.05	500
<i>Poa labillardierei</i>	Common Tussock Grass	0.3 - 0.8	7	7000
<i>Gahnia radialis</i>	Thatch Saw Sedge	1-2 x 0.5 - 2	5	5000
<i>Calystegia sepium</i>	Large Bindweed	0.5 - 1.5 x 1	0.02	200
<i>Epacris impressa</i>	Common Heath	10 - 4.0	0.12	1200
<i>Banksia marginata</i>	Silver Banksia	0.5-1.5 x 0.2-0.6	0.12	1200
<i>Kunzea ericoides</i>	Burgan	2-5 x 2-4	0.12	1200
<i>Hibbertia riparia</i>	Erect Gunia flower	0.3 x 0.6	0.05	500
<i>Acrotriche serrulata</i>	Honey-pots	0.1-0.3 x 0.2-0.4	0.05	500
<i>Leptosperma filiforme</i>	Common Rubber-Sedge	to 0.9 high	0.1	1000
<i>Pteridium esculentum</i>	Austral Bracken	to 1.5 high	0.05	500



- LEGEND:**
- RIISING MAIN (BY OTHERS)
 - MAIN LAGOON PIPELINES
 - LAGOON BYPASSSES
 - FOX PROOF FENCE
 - SECURITY FENCE
 - POWER
 - FUTURE IRRIGATION MAIN
 - BIRD HIDE
 - GRAVEL WALKING TRACK
 - BOARDWALK
 - HARD STAND AREA
 - GRAVEL PEDESTRIAN PATH
 - SLUDGE DRYING AREA
 - FACULTATIVE LAGOON
 - MATURATION LAGOON
 - DUCKWEED POND
 - WETLAND 1
 - WETLAND 2
 - MACROPHYTE BED

- IN CONTRACT**
- YR 1 SPRING MARSH, SHALLOW FRESH WATER MARSH AREA:5504m²
 - YR 1 AUTUMN AREA:864.3m²
 - YR 2 SPRING AREA:2964m²
 - YR 2 AUTUMN AREA:5087m²
 - YR 3 AUTUMN AREA:11963m²
 - YR 4 AUTUMN AREA:10508m²
- OUT OF CONTRACT**
- BANKSIA AND KUNZEA FOREST (TERRESTRIAL AREA 2)
 - SWAMP GUM AND MEALY STRINGYBARK WOODLAND (TERRESTRIAL AREA 2)
 - PEPPERGUM WOODLAND (TERRESTRIAL AREA 2)
 - DENSE MELALUELA FOREST (TERRESTRIAL AREA 1)
 - FRESHWATER MEADOW

PLAN
SCALE 1:2000



REV

REV	DESCRIPTION	DATE
1	RE-ISSUED FOR CONSTRUCTION	26.02.10
0	ISSUED FOR CONSTRUCTION	21.01.10

NAME

NAME	SIGNATURE
P. WILKS	
R. WISSING	
J. SMITH	
A. LIBBY	

Kellogg Brown & Root Pty Ltd

KBR

Kellogg Brown & Root Pty Ltd
ABN 91 007 660 317

MEENYAN SEWAGE TREATMENT PLANT LANDSCAPE PLAN PLANTING TIMING PLAN

DRAWING No. **SMETC0032**

REVISION **1**