

DRAWING LIST

DRG No.	DRAWING TITLE
31-1412410-E001	GENERAL ARRANGEMENT - SHEET 1
31-1412410-E002	GENERAL ARRANGEMENT - SHEET 2
31-1412410-E003	SINGLE LINE DIAGRAM
31-1412410-E004	230VAC & 24VDC CONTROL - SCHEMATIC DIAGRAM
31-1412410-E005	24V CONTROL & PUMP CURRENT TRANSFORMERS - SCHEMATIC DIAGRAM
31-1412410-E006	ALARM DIALLER & RADIO TELEMETRY UNIT - SCHEMATIC DIAGRAM
31-1412410-E007	SWITCHBOARD CONSTRUCTION AND INSTALLATION NOTES

SOUTH GIPPSLAND WATER APPROVAL

MANAGER OPERATIONS	SIGNATURE	DATE
OPERATIONS SUPERVISOR - EASTERN REGION	RAVI RAVEENDRAN	
OPERATIONS SUPERVISOR - CENTRAL REGION	PETER MOORE	
OPERATIONS SUPERVISOR - WESTERN REGION	JOHN BOURKE	
IT MANAGER	DAVE LINDSAY	
SCADA TECH	MATT PURVIS	
PROJECT SERVICES MANAGER	TRAVIS BRUCE	
	RICK SZYDZIK	

L PERRY
 T GRAHAM
 G FOSTER
 J HALL
 T GRAHAM
 13/7/10
 AS SHOWN

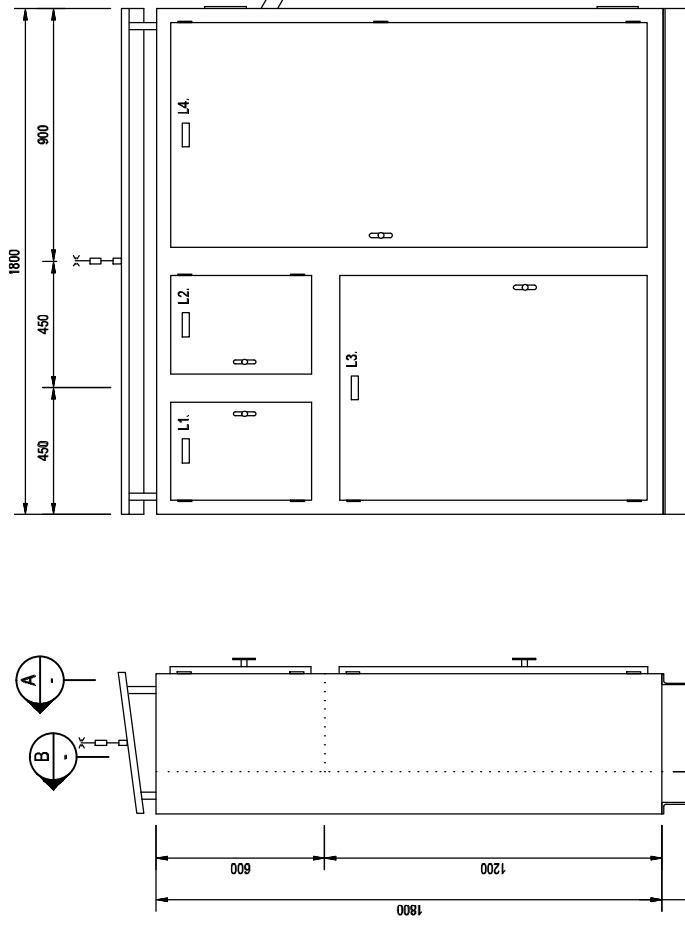


L P JH* TC* 1/10/10
 NG JH* TC* 13/7/10

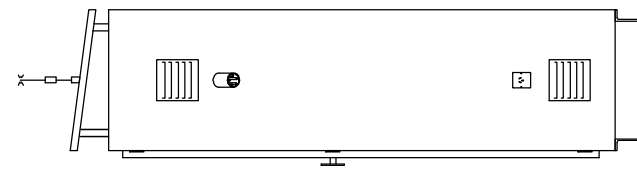
1 ISSUED TO CLIENT
 0 ORIGINAL DESIGN ISSUE

**SOUTH GIPPSLAND WATER
 TYPICAL PUMP STATION SWITCHBOARD
 GENERAL ARRANGEMENT - SHEET 1**

31-1412410-E001

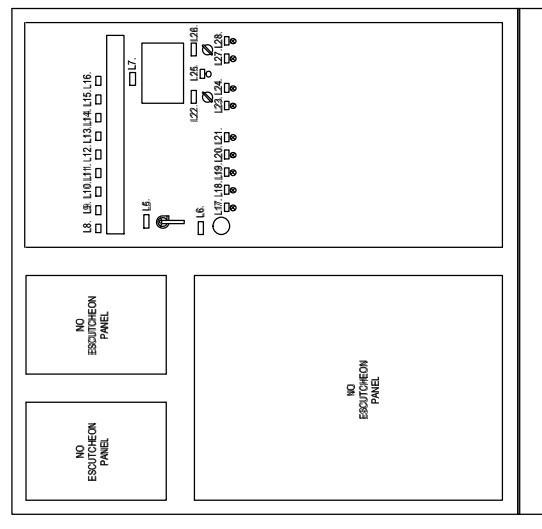


FRONT ELEVATION

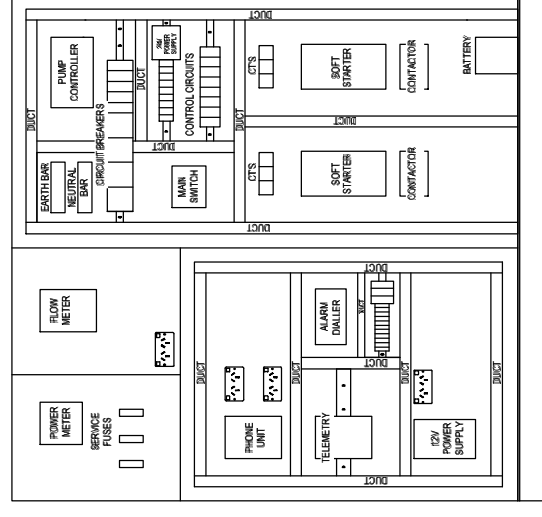


SIDE ELEVATION

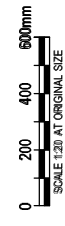
LABEL	DESCRIPTION
L1.	METERING
L2.	FLOW METER (OR SPARE)
L3.	TELEMETRY
L4.	PUMP CONTROLS
L5.	MAIN SWITCH
L6.	EMERGENCY STOP
L7.	MULTISMART PUMP CONTROLLER
L8.	CB1 - PUMP 1
L9.	CB2 - PUMP 2
L10.	CB3 - SURGE PROTECTOR
L11.	CB4 - PHASE FAIL RELAY
L12.	CB5 - CONTROL COMPARTMENT
L13.	CB6 - ANTI CONDENSATION HEATER
L14.	RC07 - SOCKET OUTLET
L15.	RC08 - TELEMETRY COMPARTMENT
L16.	RC09 FLOW METER COMPARTMENT
L17.	EMERGENCY STOP INDICATOR
L18.	POWER ON INDICATOR
L19.	SURGE PROTECTOR INDICATOR
L20.	WET WELL HIGH LEVEL INDICATOR
L21.	WET WELL LOW LEVEL INDICATOR
L22.	PUMP 1 SELECTOR SWITCH AUTO - OFF - MANUAL
L23.	PUMP 1 RUNNING INDICATOR
L24.	PUMP 1 SOFT START FAULT INDICATOR
L25.	PUMP STATION RESET
L26.	PUMP 2 SELECTOR SWITCH AUTO - OFF - MANUAL
L27.	PUMP 2 RUNNING INDICATOR
L28.	PUMP 2 SOFT START FAULT INDICATOR



A SECTION

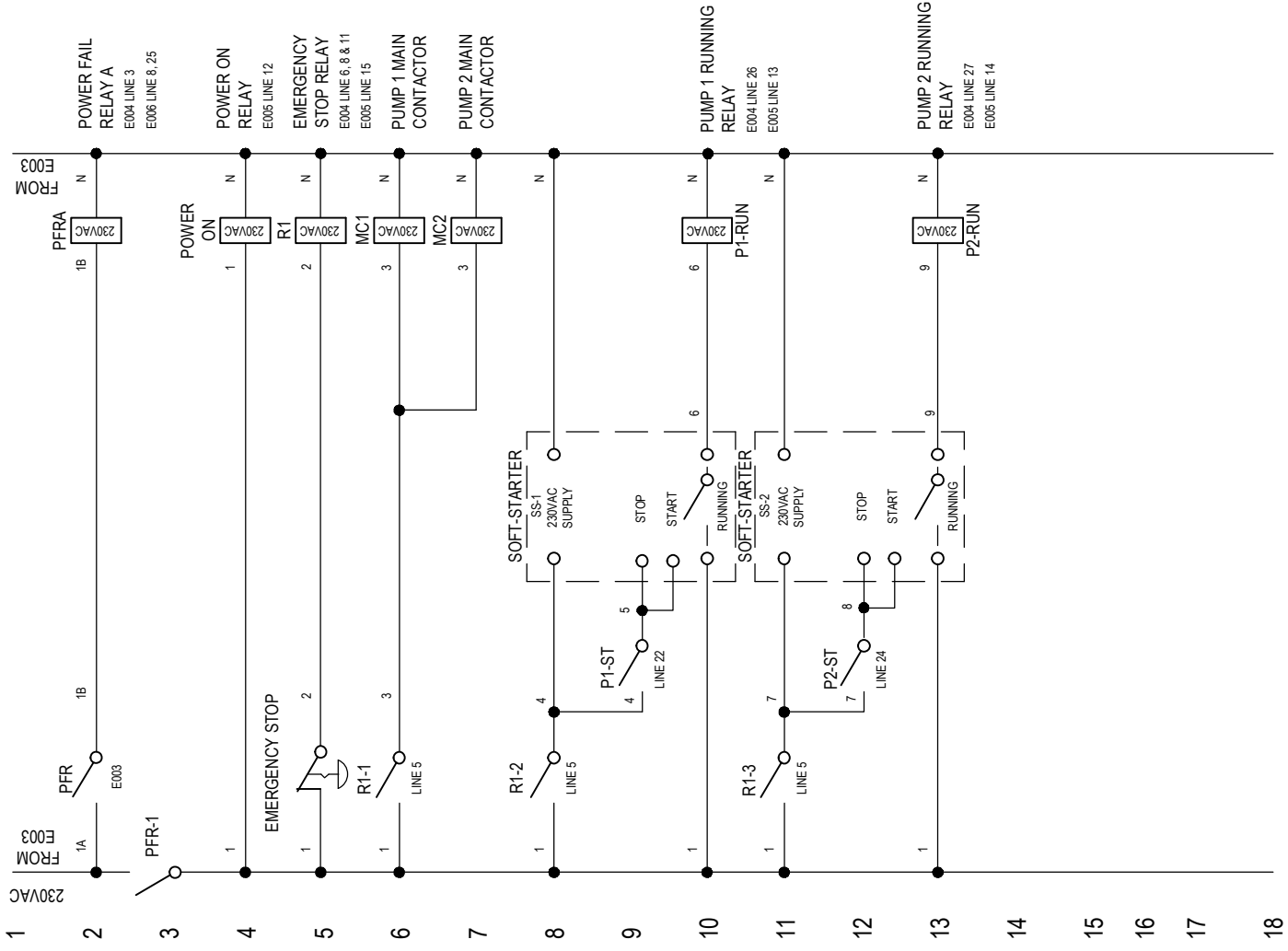
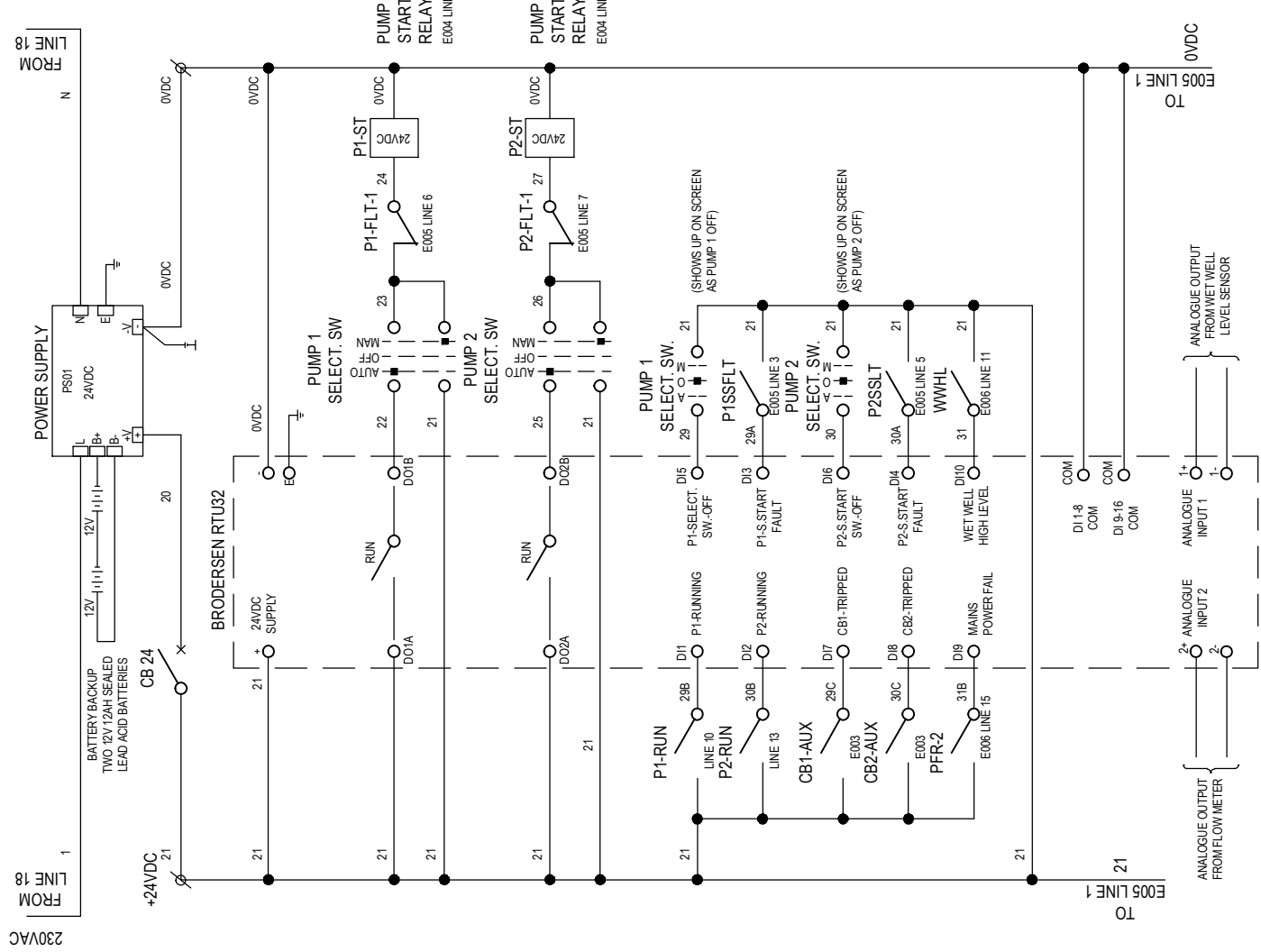


B SECTION



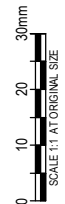
L PERRY
G FOSTER
T GRAHAM
13/7/2010
AS SHOWN

T GRAHAM
J HALL



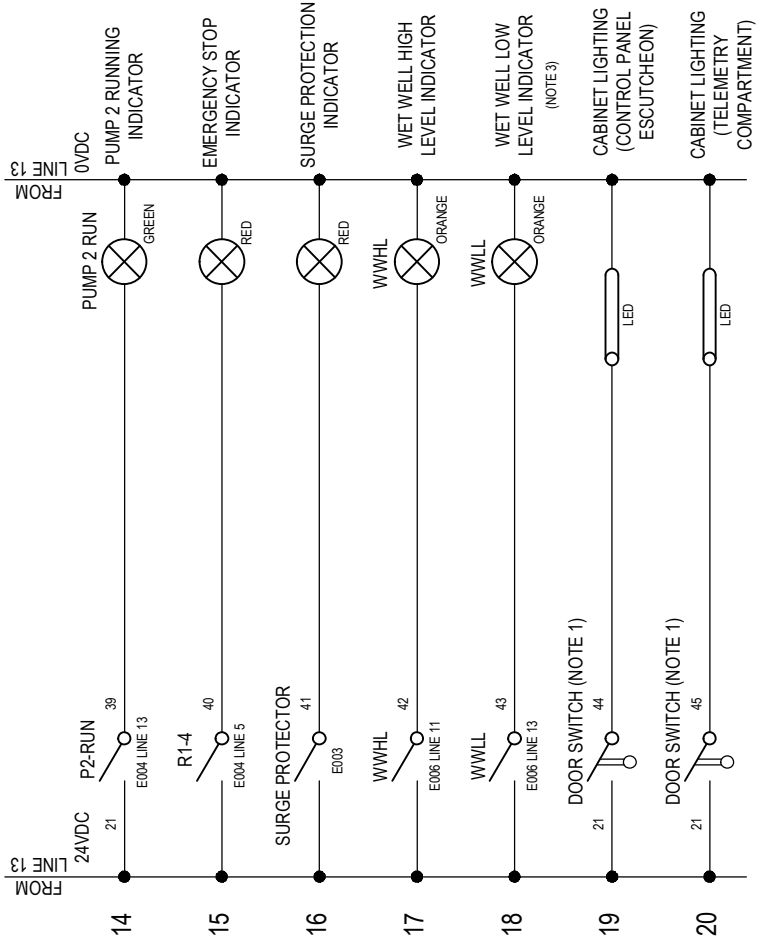
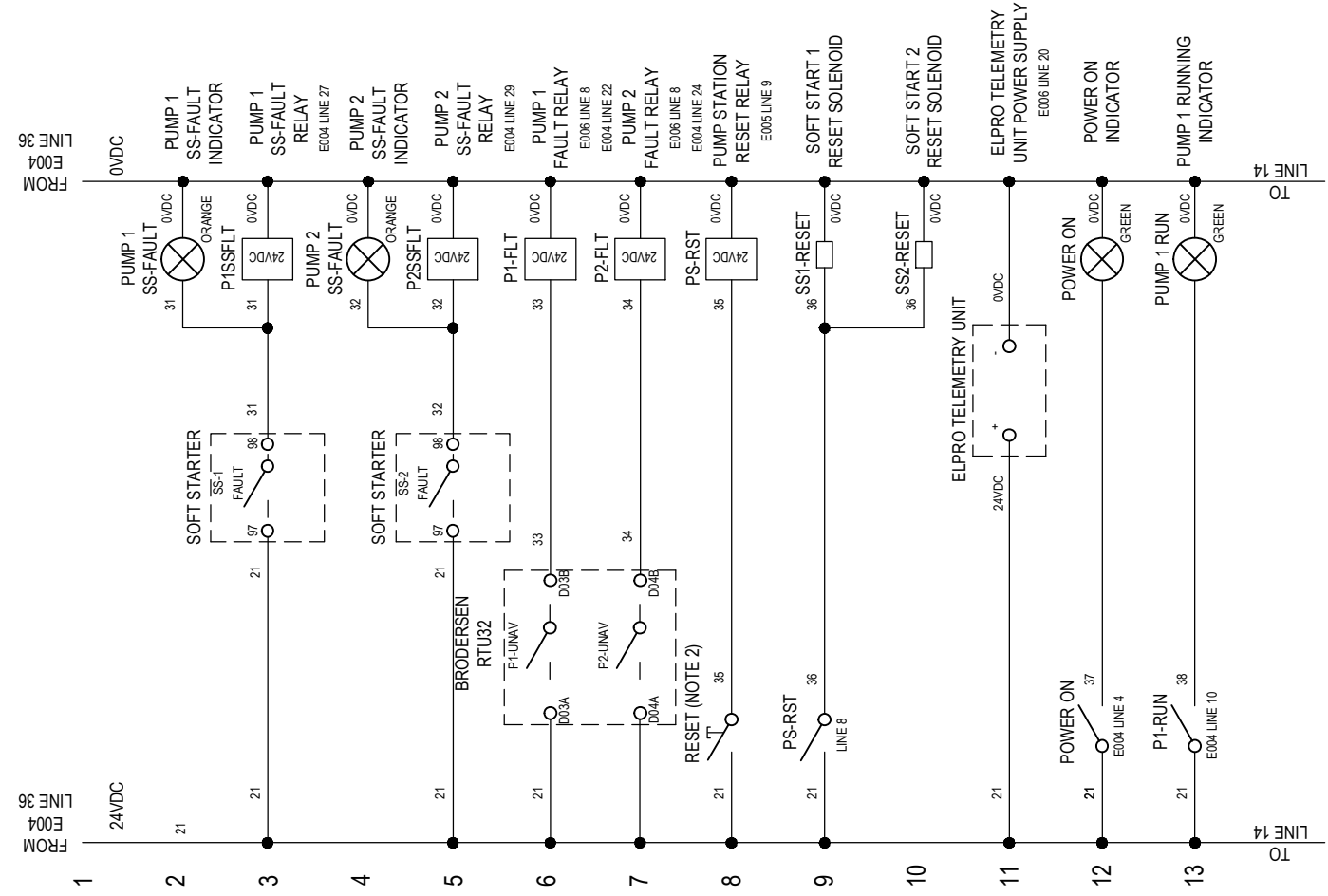
**SOUTH GIPPSLAND WATER
TYPICAL PUMP STATION SWITCHBOARD
230VAC CONTROL & 24VDC CONTROL
SCHEMATIC DIAGRAM
31-1412410-E004**

T GRAHAM
J HALL
L FERRY
G FOSTER
T GRAHAM
1377/2010
AS SHOWN



1 ISSUED TO CLIENT
0 ORIGINAL DESIGN ISSUE

LP JHT TG 1/10/10
NG JHT TG 137/10



NOTES:

1. DOOR SWITCH NORMALLY OPEN WHEN CUBICLE DOOR IS CLOSED. CLOSING WHEN DOOR OPENS.
2. SWITCH IS USED TO RESET SOFT STARTERS. RESET SWITCH IS NORMALLY OPEN. SWITCH CLOSING WHEN RESET BUTTON IS PRESSED.
3. ONLY IF REQUIRED.

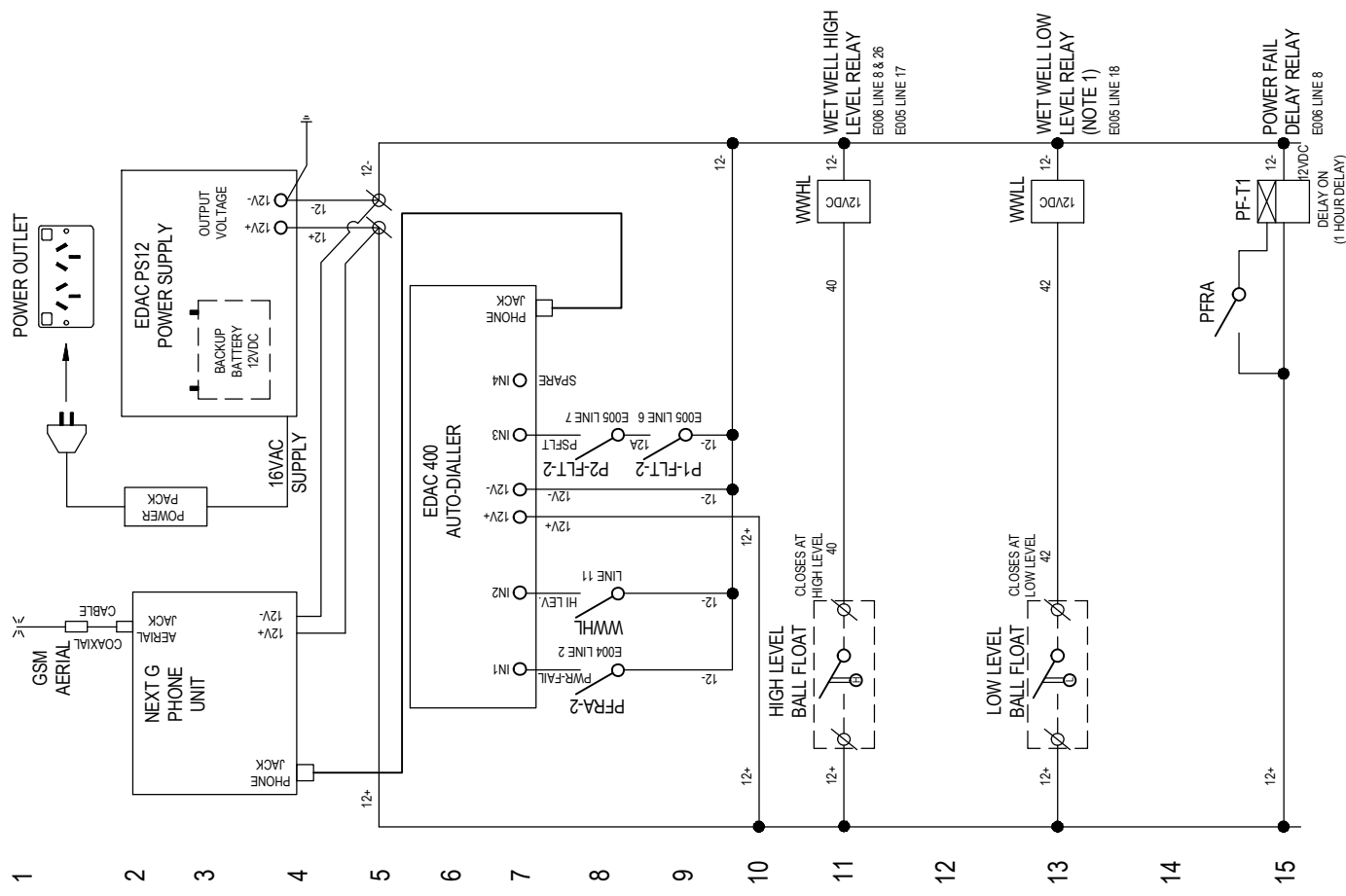


1/10/10
13/7/10

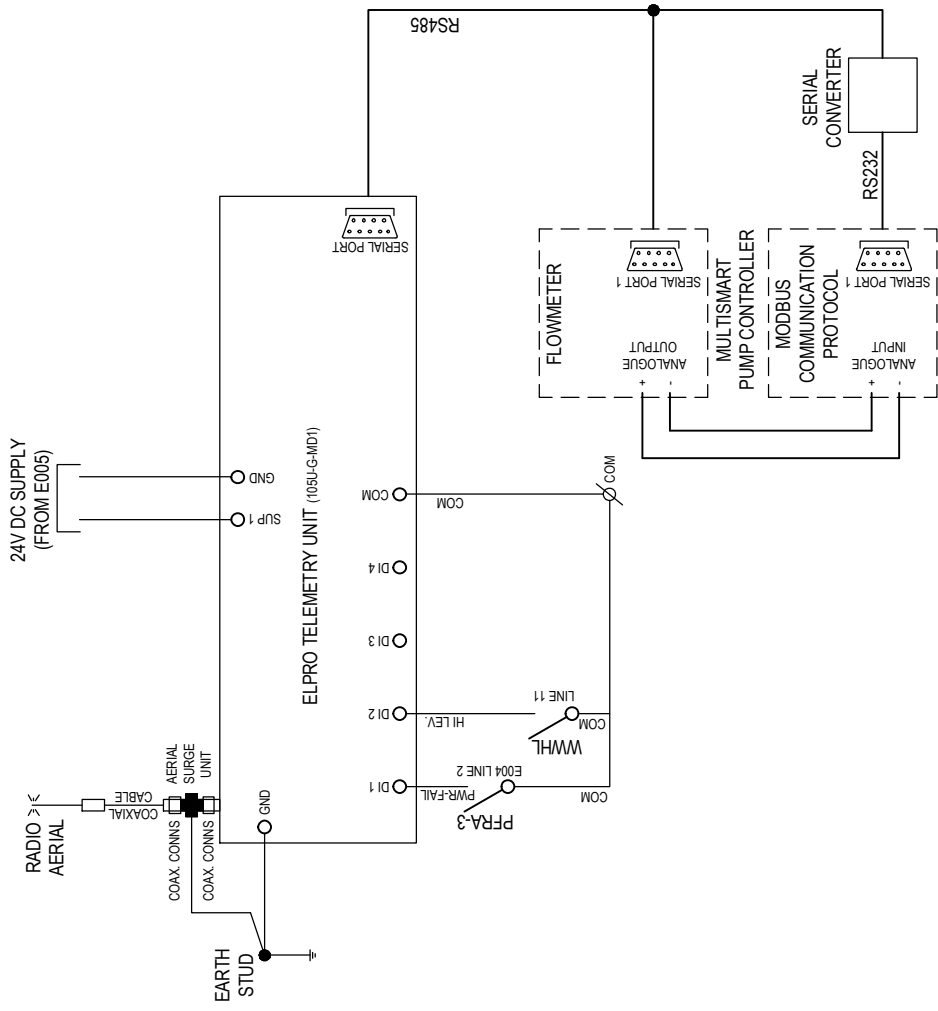
ISSUED TO CLIENT
ORIGINAL DESIGN ISSUE

L PERRY
G FOSTER
T GRAHAM*
13/7/2010
AS SHOWN

T GRAHAM
J HALL*



18
19
20
21
22
23
24
25
26
27
28
29
30
31
32
33



- NOTES:
1. WET WELL LOW LEVEL RELAY & INDICATOR OPTIONAL (ONLY IF REQUIRED)
 2. LEVEL SIGNAL FROM DRAWING E004 CONNECTED TO TELEMETRY THROUGH MULTISMART PUMP CONTROLLER.
 3. FOR ADDITIONAL ANALOGUE INPUTS (ONLY IF REQUIRED) SERIAL EXPANSION MODULE 115S-12 SHALL BE CONNECTED TO THE TELEMETRY VIA RS485 CONNECTION.



4.4 CABLE PIT CONSTRUCTION

MINIMUM CABLE PIT SIZE TO BE 600 MM X 900 MM WIDE X 600 MM DEEP.
CAST IN SITU CABLE PITS TO BE CONSTRUCTED FROM GRADE S40/20 CONCRETE WITH PRE-CAST COVER AND FRAME SOLID TO GATIC 30/1566D. COVER AND FRAME TO MEET AS 3968. INSTALLED TO MANUFACTURER'S REQUIREMENTS

CABLE DIRECTION MARKERS TO BE INSTALLED ON TOP OF PIT. PIT NAME TO BE INSTALLED ON TOP OF PIT WHERE REQUIRED EG "ELECTRICAL CABLE PIT NO.1"

THE CABLE PIT COVER SHALL BE INSTALLED FLUSH WITH THE SURROUNDING FINISHED SURFACE LEVEL ON ALL AREAS SUBJECT TO PEDESTRIAN OR ROAD TRAFFIC. AT OTHER LOCATIONS THE CABLE PIT COVER SHALL BE 300 MM ABOVE THE SURROUNDING FINISHED SURFACE LEVEL TO PREVENT THE INGRESS OF WATER AND SILT.

CABLE PITS SHALL BE INSTALLED AT ALL CHANGES IN CABLE DIRECTION. ALL CABLE JUNCTION POINTS, AND AT LEAST EVERY 50 METRES.

MINIMUM OF 2 SPARE CABLE ENTRIES SHALL BE PROVIDED FOR FUTURE USE.
ALL CABLE ENTRIES SHALL BE SEALED TO PREVENT THE INGRESS OF SOIL AND WATER INTO THE PIT.

WHERE PRACTICAL VERMIN PROOF DRAINAGE SHALL BE PROVIDED TO DISCHARGE WATER SEEPAGE FROM THE PIT.

CABLE PITS SHALL NOT BE INSTALLED IN LOCATIONS SUBJECT TO VEHICULAR TRAFFIC.
ALL FOREIGN MATERIAL INCLUDING SAND AND DIRT SHALL BE REMOVED FROM THE PIT AFTER INSTALLATION.

4.5 UNDERGROUND ELECTRICAL CONDUITS
VERIFY THAT ALL UNDERGROUND SERVICES HAVE BEEN IDENTIFIED. LOCATED AND ALL NECESSARY APPROVALS FROM RELEVANT AUTHORITIES HAVE BEEN OBTAINED BEFORE COMMENCING ANY WORK.

THE BASE OF TRENCHES SHALL BE FREE OF DEBRIS, STONES AND SHARP OBJECTS.
EXCAVATIONS IN PROXIMITY TO PAVED AREAS SHALL BE SUITABLY SHORED TO PREVENT THE SIDES OF THE EXCAVATION FROM COLLAPSING. PAVED AREAS SHALL NOT BE UNDERMINED BY EXCAVATIONS FROM WORK UNDER THE CONTRACTS. ANY DAMAGE CAUSED SHALL BE TREATED AS A NON-COMFORMANCE.

PRIOR TO BACKFILLING ANY TRENCHES, THE CONTRACTOR SHALL CERTIFY THAT THE CONDUITS HAVE BEEN INSTALLED IN ACCORDANCE WITH THE CONTRACT AND AS BUILT RECORDS OF THE LOCATION OF THE CONDUITS HAVE BEEN RECORDED.

PAVEMENT SURFACES, INCLUDING CONCRETE OR BRICK PAVED AREAS AND PATHWAYS, SHALL BE REINSTITATED TO THE SATISFACTION OF THE SUPERINTENDENT.

4.6 TESTING, COMMISSIONING, DRAWINGS & DOCUMENTATION
REFER TO SGW ELECTRICAL STANDARDS FOR SGW CONTRACTORS (STE-013).

4.2 SWITCHBOARD CONSTRUCTION

SWITCHBOARD CONSTRUCTION TO AS 3498-1 FORM 2 MINIMUM.
DEGREE OF PROTECTION IP54 (INDOOR) / IP56 (OUTDOOR) TO AS 60528
RIGID FOLDED AND WELDED CONSTRUCTION FROM 1.5 MM 316 STAINLESS STEEL / 3 MM MARINE GRADE ALUMINIUM - POWDER COATED COLOURBOND COTTAGE GREEN R .

ALL INTERNAL DOORS / PANELS / ESCUTCHEONS / GEAR TRAYS FROM 2 MM MILD STEEL POWDER COATED GLOSS WHITE.

ALL EXTERNAL DOORS FITTED WITH NEOPRENE SEALING STRIPS IN CHANNEL.
STAINLESS STEEL / CORROSION RESISTANT LIFT OFF HINGES AND HINGE PINS WITH TOP HINGE PIN 5 MM LONGER THAN OTHERS.

HYDRAULIC DOOR STAYS FITTED TO ALL HINGED DOORS.
MINIMUM OPENING FOR ALL HINGED DOORS 105 DEGREES.

LOCKWOOD L HANDLE 8474 CP HANDLES ON ALL EXTERNAL DOORS TO COMPARTMENTS WITH INTERNAL DOORS, PANELS, OR ESCUTCHEONS. POWER INDUSTRY LOCK ON METER COMPARTMENTS; SOUTH GIPPSLAND WATER SECURE LOCKS ON OTHER COMPARTMENTS. (BARRELS TO BE SUPPLIED BY SOUTH GIPPSLAND WATER). 3-POINT CLOSING MECHANISM WITH ROLLER ENDS ON ALL EXTERNAL DOORS GREATER THAN 600 MM HIGH. TWO SPARE KEYS TO BE PROVIDED WITH EACH SWITCHBOARD.

MANUFACTURE ALL VENTS INTEGRAL WITH CUBICLE.
INSET SCREENS/TERMITE MESH AND DUST PROOFING FITTED ON ALL VENTS.
PROVIDE VENTILATION TO SUIT FINAL EQUIPMENT SELECTED.

NON-FERROUS GLAND PLATES SEALED WITH NEOPRENE GASKETS.
DOOR MOUNTED EQUIPMENT PROTECTED OR SHROUDED TO PREVENT INADVERTENT CONTACT WITH LIVE TERMINALS AND WIRING.

SCHEDULE HOLDER TO DOORS OF ALL DISTRIBUTION PANELS.
A4 DRAWING HOLDER.

100 MM HOT DIP GALVANISED PLINTH WITH INSULATING MEMBRANE. TOE OUT CONSTRUCTION. SECURED TO FOUNDATION USING M16 CHEMICAL ANCHORS WITH MASTIC SEALANT BETWEEN FOUNDATION AND PLINTH. PLINTH SIZE MAY BE INCREASED, DEPENDING ON INSULATION.
LIFTING EYE BOLTS AS NEEDED FOR INSTALLATION.

4.3 SWITCHBOARD INSTALLATION
CONCRETE HARDSTAND AREA IN FRONT OF SWITCHBOARD.
BOLLARDS POSITIONED TO PROTECT SWITCHBOARD FROM SITE TRAFFIC AS REQUIRED.
NO TRIPPING HAZARDS ON SITE.

ALL MATERIALS TO BE NON-CORROSIVE.
ELECTRICAL EQUIPMENT AND INSTRUMENTATION TO BE IDENTIFIED WITH PERMANENT LABELS.

INSTALLATION TO COMPLY WITH SGW ELECTRICAL STANDARDS FOR SGW CONTRACTORS (STE-013).
ALL MATERIALS TO BE NON-CORROSIVE.

ELECTRICAL EQUIPMENT AND INSTRUMENTATION TO BE IDENTIFIED WITH PERMANENT LABELS.
INSTALLATION TO COMPLY WITH SGW ELECTRICAL STANDARDS FOR SGW CONTRACTORS (STE-013).

SWITCHBOARD TO BE INSTALLED CLOSE TO THE PUMP WELL WITH DOORS OPENING SO THAT THE PUMPS CAN BE SEEN WHEN OPERATING THE PUMP STATION AT THE SWITCHBOARD.

THE SWITCHBOARD IS NOT TO OBSTRUCT ACCESS TO THE PUMPS OR OTHER EQUIPMENT ON SITE.
NO SCRATCHES, MARKS OR DAMAGE TO THE SWITCHBOARD EQUIPMENT.

4.2 SWITCHBOARD CONSTRUCTION

SWITCHBOARD CONSTRUCTION TO AS 3498-1 FORM 2 MINIMUM.
DEGREE OF PROTECTION IP54 (INDOOR) / IP56 (OUTDOOR) TO AS 60528
RIGID FOLDED AND WELDED CONSTRUCTION FROM 1.5 MM 316 STAINLESS STEEL / 3 MM MARINE GRADE ALUMINIUM - POWDER COATED COLOURBOND COTTAGE GREEN R .

ALL INTERNAL DOORS / PANELS / ESCUTCHEONS / GEAR TRAYS FROM 2 MM MILD STEEL POWDER COATED GLOSS WHITE.

ALL EXTERNAL DOORS FITTED WITH NEOPRENE SEALING STRIPS IN CHANNEL.
STAINLESS STEEL / CORROSION RESISTANT LIFT OFF HINGES AND HINGE PINS WITH TOP HINGE PIN 5 MM LONGER THAN OTHERS.

HYDRAULIC DOOR STAYS FITTED TO ALL HINGED DOORS.
MINIMUM OPENING FOR ALL HINGED DOORS 105 DEGREES.

LOCKWOOD L HANDLE 8474 CP HANDLES ON ALL EXTERNAL DOORS TO COMPARTMENTS WITH INTERNAL DOORS, PANELS, OR ESCUTCHEONS. POWER INDUSTRY LOCK ON METER COMPARTMENTS; SOUTH GIPPSLAND WATER SECURE LOCKS ON OTHER COMPARTMENTS. (BARRELS TO BE SUPPLIED BY SOUTH GIPPSLAND WATER). 3-POINT CLOSING MECHANISM WITH ROLLER ENDS ON ALL EXTERNAL DOORS GREATER THAN 600 MM HIGH. TWO SPARE KEYS TO BE PROVIDED WITH EACH SWITCHBOARD.

MANUFACTURE ALL VENTS INTEGRAL WITH CUBICLE.
INSET SCREENS/TERMITE MESH AND DUST PROOFING FITTED ON ALL VENTS.
PROVIDE VENTILATION TO SUIT FINAL EQUIPMENT SELECTED.

NON-FERROUS GLAND PLATES SEALED WITH NEOPRENE GASKETS.
DOOR MOUNTED EQUIPMENT PROTECTED OR SHROUDED TO PREVENT INADVERTENT CONTACT WITH LIVE TERMINALS AND WIRING.

SCHEDULE HOLDER TO DOORS OF ALL DISTRIBUTION PANELS.
A4 DRAWING HOLDER.

100 MM HOT DIP GALVANISED PLINTH WITH INSULATING MEMBRANE. TOE OUT CONSTRUCTION. SECURED TO FOUNDATION USING M16 CHEMICAL ANCHORS WITH MASTIC SEALANT BETWEEN FOUNDATION AND PLINTH. PLINTH SIZE MAY BE INCREASED, DEPENDING ON INSULATION.
LIFTING EYE BOLTS AS NEEDED FOR INSTALLATION.

4.3 SWITCHBOARD INSTALLATION
CONCRETE HARDSTAND AREA IN FRONT OF SWITCHBOARD.
BOLLARDS POSITIONED TO PROTECT SWITCHBOARD FROM SITE TRAFFIC AS REQUIRED.
NO TRIPPING HAZARDS ON SITE.

ALL MATERIALS TO BE NON-CORROSIVE.
ELECTRICAL EQUIPMENT AND INSTRUMENTATION TO BE IDENTIFIED WITH PERMANENT LABELS.

INSTALLATION TO COMPLY WITH SGW ELECTRICAL STANDARDS FOR SGW CONTRACTORS (STE-013).
ALL MATERIALS TO BE NON-CORROSIVE.

ELECTRICAL EQUIPMENT AND INSTRUMENTATION TO BE IDENTIFIED WITH PERMANENT LABELS.
INSTALLATION TO COMPLY WITH SGW ELECTRICAL STANDARDS FOR SGW CONTRACTORS (STE-013).

SWITCHBOARD TO BE INSTALLED CLOSE TO THE PUMP WELL WITH DOORS OPENING SO THAT THE PUMPS CAN BE SEEN WHEN OPERATING THE PUMP STATION AT THE SWITCHBOARD.

THE SWITCHBOARD IS NOT TO OBSTRUCT ACCESS TO THE PUMPS OR OTHER EQUIPMENT ON SITE.
NO SCRATCHES, MARKS OR DAMAGE TO THE SWITCHBOARD EQUIPMENT.

4.2 SWITCHBOARD CONSTRUCTION

SWITCHBOARD CONSTRUCTION TO AS 3498-1 FORM 2 MINIMUM.
DEGREE OF PROTECTION IP54 (INDOOR) / IP56 (OUTDOOR) TO AS 60528
RIGID FOLDED AND WELDED CONSTRUCTION FROM 1.5 MM 316 STAINLESS STEEL / 3 MM MARINE GRADE ALUMINIUM - POWDER COATED COLOURBOND COTTAGE GREEN R .

ALL INTERNAL DOORS / PANELS / ESCUTCHEONS / GEAR TRAYS FROM 2 MM MILD STEEL POWDER COATED GLOSS WHITE.

ALL EXTERNAL DOORS FITTED WITH NEOPRENE SEALING STRIPS IN CHANNEL.
STAINLESS STEEL / CORROSION RESISTANT LIFT OFF HINGES AND HINGE PINS WITH TOP HINGE PIN 5 MM LONGER THAN OTHERS.

HYDRAULIC DOOR STAYS FITTED TO ALL HINGED DOORS.
MINIMUM OPENING FOR ALL HINGED DOORS 105 DEGREES.

LOCKWOOD L HANDLE 8474 CP HANDLES ON ALL EXTERNAL DOORS TO COMPARTMENTS WITH INTERNAL DOORS, PANELS, OR ESCUTCHEONS. POWER INDUSTRY LOCK ON METER COMPARTMENTS; SOUTH GIPPSLAND WATER SECURE LOCKS ON OTHER COMPARTMENTS. (BARRELS TO BE SUPPLIED BY SOUTH GIPPSLAND WATER). 3-POINT CLOSING MECHANISM WITH ROLLER ENDS ON ALL EXTERNAL DOORS GREATER THAN 600 MM HIGH. TWO SPARE KEYS TO BE PROVIDED WITH EACH SWITCHBOARD.

MANUFACTURE ALL VENTS INTEGRAL WITH CUBICLE.
INSET SCREENS/TERMITE MESH AND DUST PROOFING FITTED ON ALL VENTS.
PROVIDE VENTILATION TO SUIT FINAL EQUIPMENT SELECTED.

NON-FERROUS GLAND PLATES SEALED WITH NEOPRENE GASKETS.
DOOR MOUNTED EQUIPMENT PROTECTED OR SHROUDED TO PREVENT INADVERTENT CONTACT WITH LIVE TERMINALS AND WIRING.

SCHEDULE HOLDER TO DOORS OF ALL DISTRIBUTION PANELS.
A4 DRAWING HOLDER.

100 MM HOT DIP GALVANISED PLINTH WITH INSULATING MEMBRANE. TOE OUT CONSTRUCTION. SECURED TO FOUNDATION USING M16 CHEMICAL ANCHORS WITH MASTIC SEALANT BETWEEN FOUNDATION AND PLINTH. PLINTH SIZE MAY BE INCREASED, DEPENDING ON INSULATION.
LIFTING EYE BOLTS AS NEEDED FOR INSTALLATION.

4.3 SWITCHBOARD INSTALLATION
CONCRETE HARDSTAND AREA IN FRONT OF SWITCHBOARD.
BOLLARDS POSITIONED TO PROTECT SWITCHBOARD FROM SITE TRAFFIC AS REQUIRED.
NO TRIPPING HAZARDS ON SITE.

ALL MATERIALS TO BE NON-CORROSIVE.
ELECTRICAL EQUIPMENT AND INSTRUMENTATION TO BE IDENTIFIED WITH PERMANENT LABELS.

INSTALLATION TO COMPLY WITH SGW ELECTRICAL STANDARDS FOR SGW CONTRACTORS (STE-013).
ALL MATERIALS TO BE NON-CORROSIVE.

ELECTRICAL EQUIPMENT AND INSTRUMENTATION TO BE IDENTIFIED WITH PERMANENT LABELS.
INSTALLATION TO COMPLY WITH SGW ELECTRICAL STANDARDS FOR SGW CONTRACTORS (STE-013).

SWITCHBOARD TO BE INSTALLED CLOSE TO THE PUMP WELL WITH DOORS OPENING SO THAT THE PUMPS CAN BE SEEN WHEN OPERATING THE PUMP STATION AT THE SWITCHBOARD.

THE SWITCHBOARD IS NOT TO OBSTRUCT ACCESS TO THE PUMPS OR OTHER EQUIPMENT ON SITE.
NO SCRATCHES, MARKS OR DAMAGE TO THE SWITCHBOARD EQUIPMENT.

4.2 SWITCHBOARD CONSTRUCTION

SWITCHBOARD CONSTRUCTION TO AS 3498-1 FORM 2 MINIMUM.
DEGREE OF PROTECTION IP54 (INDOOR) / IP56 (OUTDOOR) TO AS 60528
RIGID FOLDED AND WELDED CONSTRUCTION FROM 1.5 MM 316 STAINLESS STEEL / 3 MM MARINE GRADE ALUMINIUM - POWDER COATED COLOURBOND COTTAGE GREEN R .

ALL INTERNAL DOORS / PANELS / ESCUTCHEONS / GEAR TRAYS FROM 2 MM MILD STEEL POWDER COATED GLOSS WHITE.

ALL EXTERNAL DOORS FITTED WITH NEOPRENE SEALING STRIPS IN CHANNEL.
STAINLESS STEEL / CORROSION RESISTANT LIFT OFF HINGES AND HINGE PINS WITH TOP HINGE PIN 5 MM LONGER THAN OTHERS.

HYDRAULIC DOOR STAYS FITTED TO ALL HINGED DOORS.
MINIMUM OPENING FOR ALL HINGED DOORS 105 DEGREES.

LOCKWOOD L HANDLE 8474 CP HANDLES ON ALL EXTERNAL DOORS TO COMPARTMENTS WITH INTERNAL DOORS, PANELS, OR ESCUTCHEONS. POWER INDUSTRY LOCK ON METER COMPARTMENTS; SOUTH GIPPSLAND WATER SECURE LOCKS ON OTHER COMPARTMENTS. (BARRELS TO BE SUPPLIED BY SOUTH GIPPSLAND WATER). 3-POINT CLOSING MECHANISM WITH ROLLER ENDS ON ALL EXTERNAL DOORS GREATER THAN 600 MM HIGH. TWO SPARE KEYS TO BE PROVIDED WITH EACH SWITCHBOARD.

MANUFACTURE ALL VENTS INTEGRAL WITH CUBICLE.
INSET SCREENS/TERMITE MESH AND DUST PROOFING FITTED ON ALL VENTS.
PROVIDE VENTILATION TO SUIT FINAL EQUIPMENT SELECTED.

NON-FERROUS GLAND PLATES SEALED WITH NEOPRENE GASKETS.
DOOR MOUNTED EQUIPMENT PROTECTED OR SHROUDED TO PREVENT INADVERTENT CONTACT WITH LIVE TERMINALS AND WIRING.

SCHEDULE HOLDER TO DOORS OF ALL DISTRIBUTION PANELS.
A4 DRAWING HOLDER.

100 MM HOT DIP GALVANISED PLINTH WITH INSULATING MEMBRANE. TOE OUT CONSTRUCTION. SECURED TO FOUNDATION USING M16 CHEMICAL ANCHORS WITH MASTIC SEALANT BETWEEN FOUNDATION AND PLINTH. PLINTH SIZE MAY BE INCREASED, DEPENDING ON INSULATION.
LIFTING EYE BOLTS AS NEEDED FOR INSTALLATION.

4.3 SWITCHBOARD INSTALLATION
CONCRETE HARDSTAND AREA IN FRONT OF SWITCHBOARD.
BOLLARDS POSITIONED TO PROTECT SWITCHBOARD FROM SITE TRAFFIC AS REQUIRED.
NO TRIPPING HAZARDS ON SITE.

ALL MATERIALS TO BE NON-CORROSIVE.
ELECTRICAL EQUIPMENT AND INSTRUMENTATION TO BE IDENTIFIED WITH PERMANENT LABELS.

INSTALLATION TO COMPLY WITH SGW ELECTRICAL STANDARDS FOR SGW CONTRACTORS (STE-013).
ALL MATERIALS TO BE NON-CORROSIVE.

ELECTRICAL EQUIPMENT AND INSTRUMENTATION TO BE IDENTIFIED WITH PERMANENT LABELS.
INSTALLATION TO COMPLY WITH SGW ELECTRICAL STANDARDS FOR SGW CONTRACTORS (STE-013).

SWITCHBOARD TO BE INSTALLED CLOSE TO THE PUMP WELL WITH DOORS OPENING SO THAT THE PUMPS CAN BE SEEN WHEN OPERATING THE PUMP STATION AT THE SWITCHBOARD.

THE SWITCHBOARD IS NOT TO OBSTRUCT ACCESS TO THE PUMPS OR OTHER EQUIPMENT ON SITE.
NO SCRATCHES, MARKS OR DAMAGE TO THE SWITCHBOARD EQUIPMENT.

4.2 SWITCHBOARD CONSTRUCTION

SWITCHBOARD CONSTRUCTION TO AS 3498-1 FORM 2 MINIMUM.
DEGREE OF PROTECTION IP54 (INDOOR) / IP56 (OUTDOOR) TO AS 60528
RIGID FOLDED AND WELDED CONSTRUCTION FROM 1.5 MM 316 STAINLESS STEEL / 3 MM MARINE GRADE ALUMINIUM - POWDER COATED COLOURBOND COTTAGE GREEN R .

ALL INTERNAL DOORS / PANELS / ESCUTCHEONS / GEAR TRAYS FROM 2 MM MILD STEEL POWDER COATED GLOSS WHITE.

ALL EXTERNAL DOORS FITTED WITH NEOPRENE SEALING STRIPS IN CHANNEL.
STAINLESS STEEL / CORROSION RESISTANT LIFT OFF HINGES AND HINGE PINS WITH TOP HINGE PIN 5 MM LONGER THAN OTHERS.

HYDRAULIC DOOR STAYS FITTED TO ALL HINGED DOORS.
MINIMUM OPENING FOR ALL HINGED DOORS 105 DEGREES.

LOCKWOOD L HANDLE 8474 CP HANDLES ON ALL EXTERNAL DOORS TO COMPARTMENTS WITH INTERNAL DOORS, PANELS, OR ESCUTCHEONS. POWER INDUSTRY LOCK ON METER COMPARTMENTS; SOUTH GIPPSLAND WATER SECURE LOCKS ON OTHER COMPARTMENTS. (BARRELS TO BE SUPPLIED BY SOUTH GIPPSLAND WATER). 3-POINT CLOSING MECHANISM WITH ROLLER ENDS ON ALL EXTERNAL DOORS GREATER THAN 600 MM HIGH. TWO SPARE KEYS TO BE PROVIDED WITH EACH SWITCHBOARD.

MANUFACTURE ALL VENTS INTEGRAL WITH CUBICLE.
INSET SCREENS/TERMITE MESH AND DUST PROOFING FITTED ON ALL VENTS.
PROVIDE VENTILATION TO SUIT FINAL EQUIPMENT SELECTED.

NON-FERROUS GLAND PLATES SEALED WITH NEOPRENE GASKETS.
DOOR MOUNTED EQUIPMENT PROTECTED OR SHROUDED TO PREVENT INADVERTENT CONTACT WITH LIVE TERMINALS AND WIRING.

SCHEDULE HOLDER TO DOORS OF ALL DISTRIBUTION PANELS.
A4 DRAWING HOLDER.

100 MM HOT DIP GALVANISED PLINTH WITH INSULATING MEMBRANE. TOE OUT CONSTRUCTION. SECURED TO FOUNDATION USING M16 CHEMICAL ANCHORS WITH MASTIC SEALANT BETWEEN FOUNDATION AND PLINTH. PLINTH SIZE MAY BE INCREASED, DEPENDING ON INSULATION.
LIFTING EYE BOLTS AS NEEDED FOR INSTALLATION.

4.3 SWITCHBOARD INSTALLATION
CONCRETE HARDSTAND AREA IN FRONT OF SWITCHBOARD.
BOLLARDS POSITIONED TO PROTECT SWITCHBOARD FROM SITE TRAFFIC AS REQUIRED.
NO TRIPPING HAZARDS ON SITE.

ALL MATERIALS TO BE NON-CORROSIVE.
ELECTRICAL EQUIPMENT AND INSTRUMENTATION TO BE IDENTIFIED WITH PERMANENT LABELS.

INSTALLATION TO COMPLY WITH SGW ELECTRICAL STANDARDS FOR SGW CONTRACTORS (STE-013).
ALL MATERIALS TO BE NON-CORROSIVE.

ELECTRICAL EQUIPMENT AND INSTRUMENTATION TO BE IDENTIFIED WITH PERMANENT LABELS.
INSTALLATION TO COMPLY WITH SGW ELECTRICAL STANDARDS FOR SGW CONTRACTORS (STE-013).

SWITCHBOARD TO BE INSTALLED CLOSE TO THE PUMP WELL WITH DOORS OPENING SO THAT THE PUMPS CAN BE SEEN WHEN OPERATING THE PUMP STATION AT THE SWITCHBOARD.

THE SWITCHBOARD IS NOT TO OBSTRUCT ACCESS TO THE PUMPS OR OTHER EQUIPMENT ON SITE.
NO SCRATCHES, MARKS OR DAMAGE TO THE SWITCHBOARD EQUIPMENT.