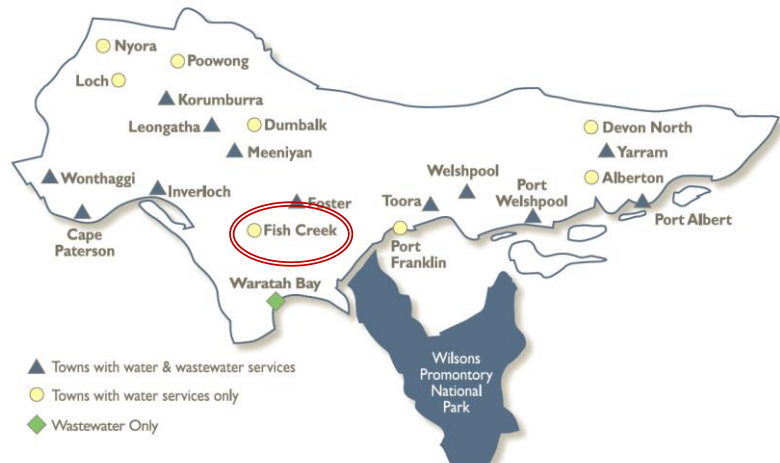


Fish Creek Water Supply System

The town of Fish Creek receives its water supply from Battery Creek Reservoir, located on Battery Creek. The reservoir has a capacity of 122 ML and allows water harvested in winter/spring to be stored and then supplied to customers in summer/autumn.

The Fish Creek water supply system also provides water supply to rural customers, who account for approximately 40% of total supply system demand in an average year.



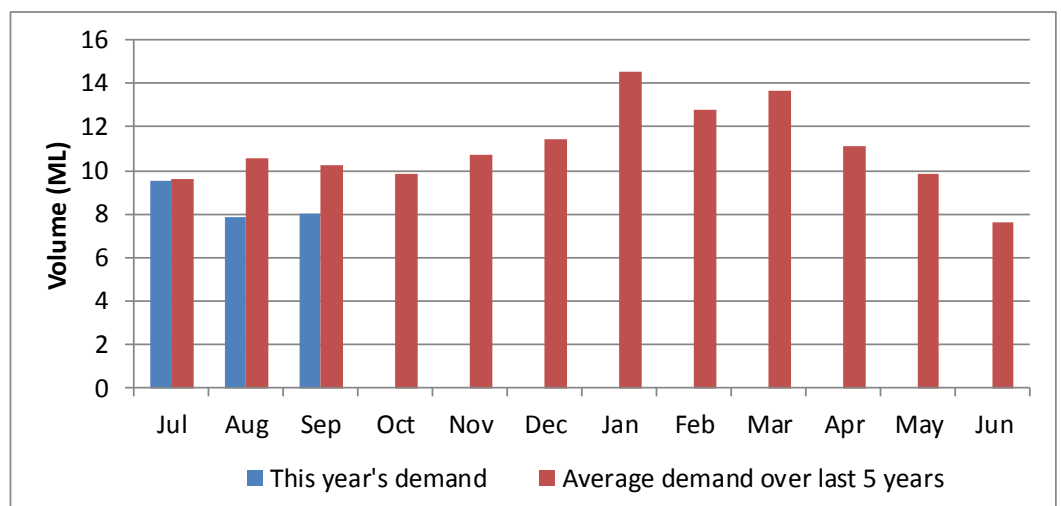
Water Supply Information

Water resources held by South Gippsland Water for the Fish Creek Water Supply System are shown below. Only 9.7% of the available annual entitlement has been used from Battery Creek Reservoir in the current year to date (Jul-Oct 2018). This entitlement is a legal right to access water, subject to availability.

Water Component	Maximum Annual Entitlement	Volume Extracted 2018-19	Volume Remaining 2018-19
Battery Creek Reservoir	251 ML	25 ML	226 ML

Water Consumption

Monthly water consumption for the Fish Creek Water Supply System in the year to date has been below the average demand over the last five years. It is assumed that this behaviour will continue throughout the rest of the year.



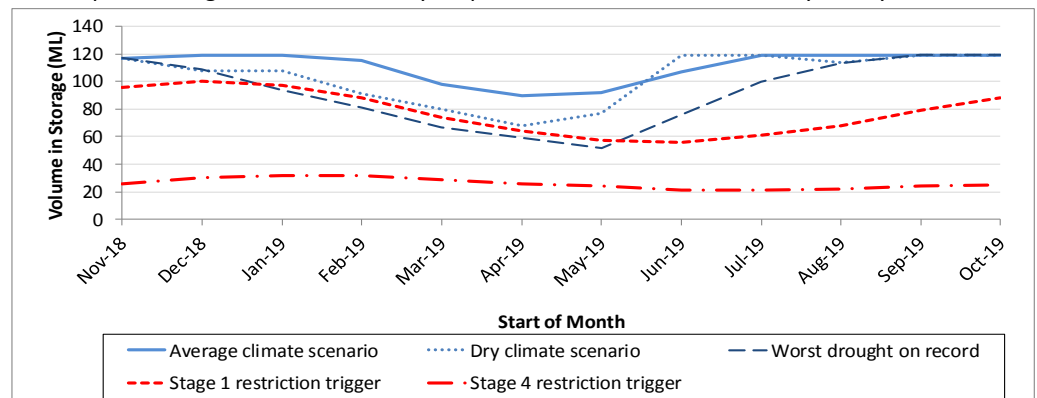
Climate Conditions

Forecast climate conditions for the coming three months have considered the Bureau of Meteorology’s seasonal climate forecast for the region and local climate conditions in the year to date. The Bureau’s climate outlook indicates that rainfall over the next three months is likely to be below the long-term average. Winter/spring rainfall in the year to date has been below average. Air temperature is forecast over the next three months to be higher than the long-term average for this time of year. After taking these factors into account, South Gippsland Water is forecasting on the basis of a dry climate scenario, which is characterised by streamflows into Battery Creek Reservoir that are drier than long-term average values.

Chance of Exceeding Median Rainfall	Chance of Exceeding Median Maximum Temperature	This Year’s Spring Rainfall	Likely Outlook Scenario
35-40%	60-65%	Dry	Dry

Urban Water Restrictions Outlook

The volume in storage outlook for Battery Creek Reservoir for the period November 2018 to October 2019 indicates that storage levels are expected to remain above water restriction triggers over the coming year under the anticipated dry climate scenario. If conditions are drier than expected stage 1 restrictions may be put into effect between January – May 2019.



Based on the volume in storage outlook and the Bureau of Meteorology climate forecast, no water restrictions are anticipated for the remainder of the year at the current time. However, it should be noted that Fish Creek (Battery Creek Storage) is a small system and can change quickly in the event of sustained dry conditions for few months. South Gippsland Water’s Permanent Water Savings Plan applies to all customers over the outlook period.

Climate Scenario	Outlook		
	1 Jan 2018	1 Apr 2018	1 Jul 2018
Wet	PWSP	PWSP	PWSP
Average	PWSP	PWSP	PWSP
Dry	PWSP	PWSP	PWSP

PWSP Permanent Water Savings Plan

Further Information:

- Battery Creek Reservoir was 98% full at the end of October.
- Volumes shown in the storage outlook are start of month values in megalitres (ML), where 1 ML is equivalent to 1 million litres (or roughly one Olympic sized swimming pool).

South Gippsland Water

1300 851 636

www.sgwater.com.au

Action Plan

A list of priority actions for this supply system is presented below. Further information on actions can be found in the Urban Water Strategy published in 2017 and Water Plan 3 publications on our website. The next phase of our Water Plan and Pricing Review is currently underway.

Action Name	Timing
Demand management	Ongoing
Reduce leaks and wastage	Ongoing
Update water security outlook	Every November

The information provided in this water security outlook is intended as a guide only. An update will be issued if conditions change during the outlook period.