

## Foster Water Supply System

The town of Foster receives its water supply from a 19 ML weir on Deep Creek. Water harvested from the creek can be transferred to Foster Dam, which has a capacity of 191 ML and a raw water basin of 27 ML capacity. The supply system storage allows water harvested in a wet year to be stored and then supplied to customers in a dry year.



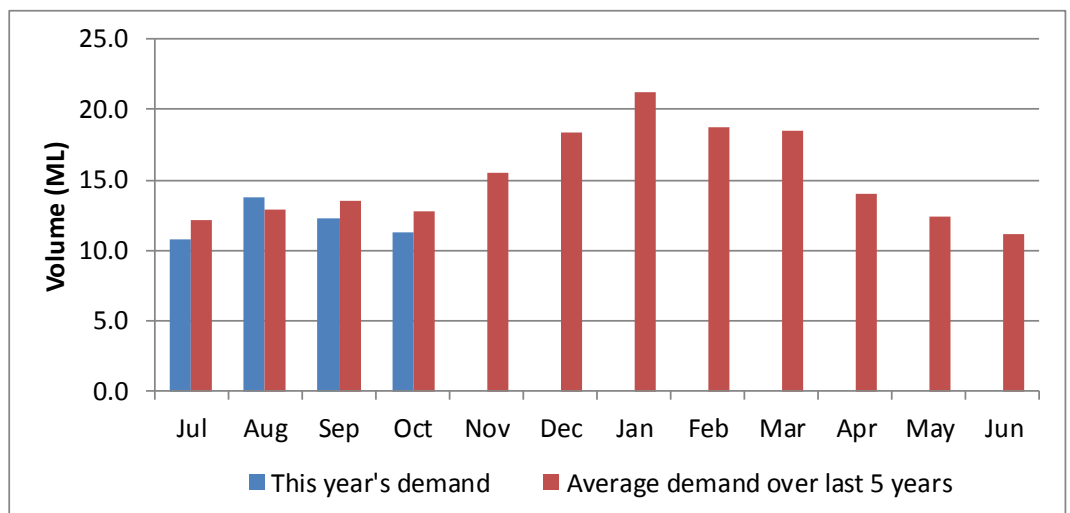
## Water Supply Information

Water resources held by South Gippsland Water for the Foster Water Supply System are shown below. Only 15% of the available annual entitlement has been used from Deep Creek Reservoir in the current year to date (Jul-Oct 2017). This entitlement is a legal right to access water, subject to availability.

Water Component	Maximum Annual Entitlement	Volume Extracted 2017-18	Volume Remaining 2017-18
Deep Creek Reservoir	326 ML	48 ML	278 ML

## Water Consumption

Monthly water consumption for the Foster Water Supply System in the year to date has mostly been below the average demand over the last five years. It is anticipated that water consumption behaviour will continue to follow this trend for the rest of the year.



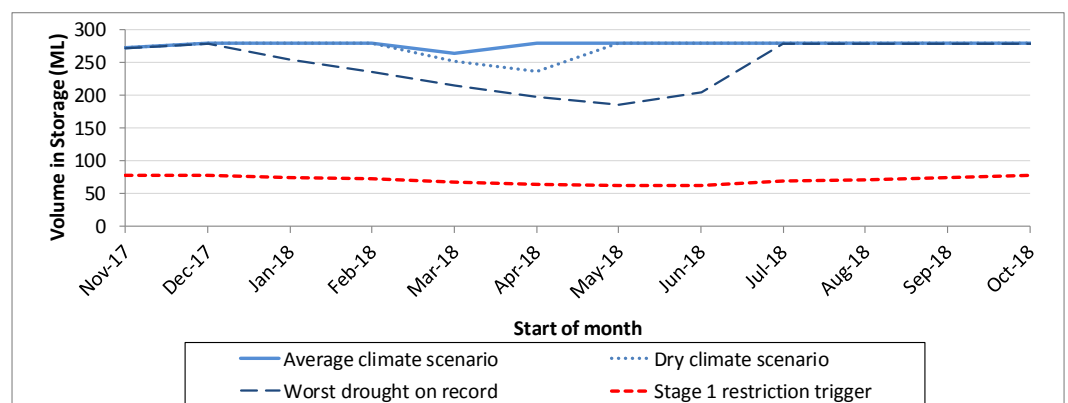
## Climate Conditions

Forecast climate conditions for the coming three months have considered the Bureau of Meteorology’s seasonal climate forecast for the region and local climate conditions in the year to date. The Bureau’s climate outlook indicates that rainfall over the next three months is likely to be similar to the long-term average. Winter/spring rainfall in the year to date has been average to slightly above average. Air temperature is forecast over the next three months to be higher than the long-term average for this time of year, but any increase in demands from these higher temperatures is likely to be moderated by the anticipated rainfall. After taking these factors into account, South Gippsland Water is forecasting on the basis of an average climate scenario, which is characterised by streamflows into the Foster storages that are similar to long-term average values.

Chance of Exceeding Median Rainfall	Chance of Exceeding Median Maximum Temperature	This Year’s Spring Rainfall	Likely Outlook Scenario
55-60%	65-70%	Average	Average

## Urban Water Restrictions Outlook

The volume in storage outlook for the Foster Water Supply System for the period November 2017 to October 2018 indicates that storage levels are expected to remain high relative to water restriction triggers over the coming year.



Based on the volume in storage outlook and the Bureau of Meteorology climate forecast, no water restrictions are anticipated for the remainder of the year at the current time. South Gippsland Water’s Permanent Water Savings Plan applies to all customers over the outlook period.

Climate Scenario	Outlook		
	1 Jan 2018	1 Apr 2018	1 Jul 2018
Wet	PWSP	PWSP	PWSP
Average	PWSP	PWSP	PWSP
Dry	PWSP	PWSP	PWSP

PWSP Permanent Water Savings Plan

### Further Information:

- The Foster Water Supply System Storages were 100% full at the end of October.
- Volumes shown in the storage outlook are start of month values in megalitres (ML), where 1 ML is equivalent to 1 million litres (or roughly one Olympic sized swimming pool).

South Gippsland Water

1300 851 636

www.sgwater.com.au

## *Action Plan*

A list of priority actions for this supply system prior to the next update of the Urban Water Strategy is presented below. Further information on actions can be found in the Urban Water Strategy published in 2017 and Water Plan 3 publications on our website. The next phase of our Water Plan and Pricing Review is currently underway.

Action Name	Timing
Demand management	Ongoing
Reduce leaks and wastage	Ongoing
Update water security outlook	Every November

The information provided in this water security outlook is intended as a guide only. An update will be issued if conditions change during the outlook period.