

Foster Water Supply System



The town of Foster receives its water supply from a 14 ML weir on Deep Creek. Water harvested from the creek can be transferred to Foster Dam, which has a capacity of 200 ML and a raw water basin of 27 ML capacity. The supply system storage allows water harvested in a wet year to be stored and then supplied to customers in a dry year.

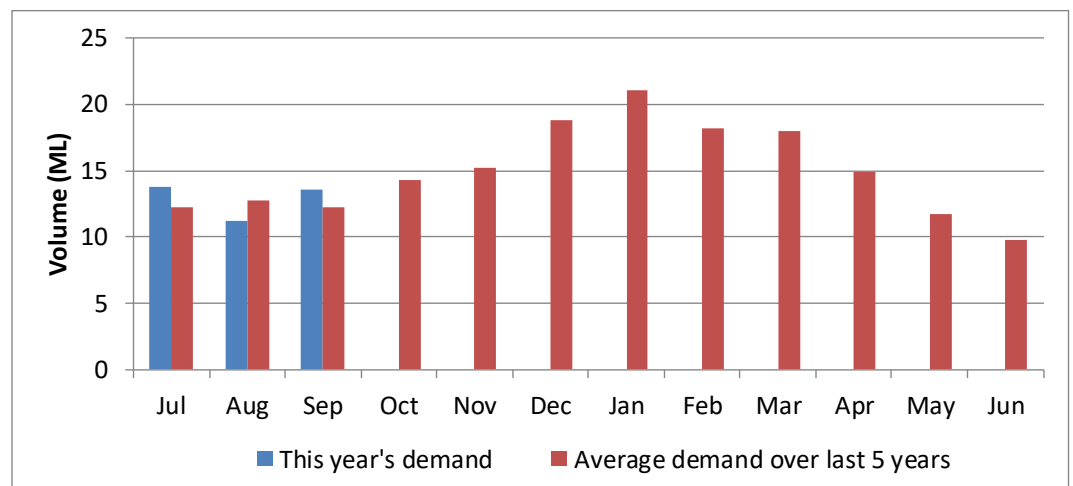
Water Supply Information

Water resources held by South Gippsland Water for the Foster Water Supply System are shown below. Only 12% of the available annual entitlement has been used from Deep Creek Reservoir in the current year to date (Jul-Oct 2019). This entitlement is a legal right to access water, subject to availability.

Water Component	Maximum Annual Entitlement	Volume Extracted 2019-20	Volume Remaining 2019-20
Deep Creek Reservoir	326 ML	39 ML	287 ML

Water Consumption

Monthly water consumption for the Foster Water Supply System in the year to date has been close to the average demand over the last five years. It is anticipated that water consumption behaviour will remain close to average values for the rest of the year.



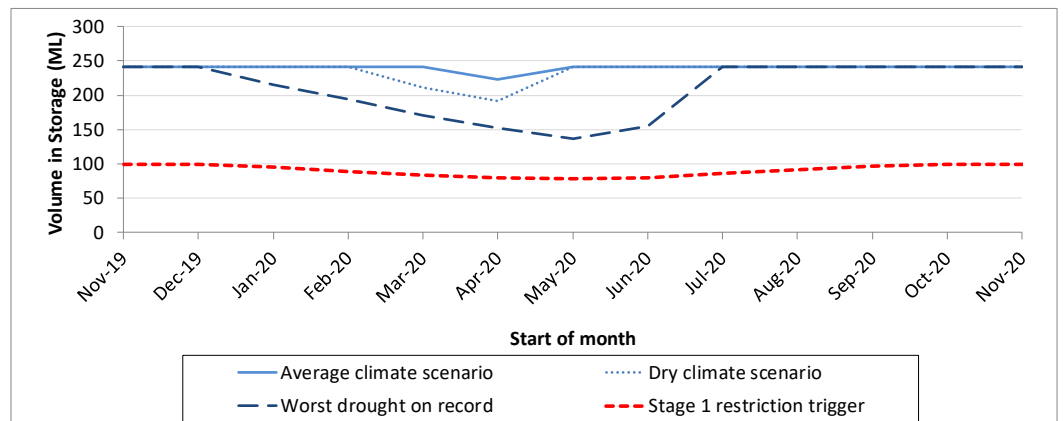
Climate Conditions

Forecast climate conditions for the coming three months have considered the Bureau of Meteorology’s seasonal climate forecast for the region and local climate conditions in the year to date. Winter/spring rainfall in the year to date has been close to the long-term average, however the Bureau’s climate outlook indicates that rainfall over the next three months is likely to be below the long-term average. Air temperature is forecast over the next three months to be close to the long-term average for this time of year, however the outlook beyond this period suggests above average temperature. After taking these factors into account, South Gippsland Water is forecasting on the basis of a dry climate scenario.

Chance of Exceeding Median Rainfall	Chance of Exceeding Median Maximum Temperature	This Year’s Spring Rainfall	Likely Outlook Scenario
30-35%	45-55%	Average	Dry

Urban Water Restrictions Outlook

The volume in storage outlook for the Foster Water Supply System for the period November 2019 to November 2020 indicates that storage levels are expected to remain high relative to water restriction triggers over the coming year.



Based on the volume in storage outlook and the Bureau of Meteorology climate forecast, no water restrictions are anticipated for the remainder of the year at the current time. South Gippsland Water’s Permanent Water Savings Plan applies to all customers over the outlook period.

Climate Scenario	Outlook		
	1 Jan 2020	1 Apr 2020	1 Jul 2020
Wet	PWSP	PWSP	PWSP
Average	PWSP	PWSP	PWSP
Dry	PWSP	PWSP	PWSP

PWSP Permanent Water Savings Plan

Further Information:

- The weir on Deep Creek and Foster Dam were 100% full at the end of October. The raw water basin was 81% full.
- Volumes shown in the storage outlook are start of month values in megalitres (ML), where 1 ML is equivalent to 1 million litres (or roughly one Olympic sized swimming pool).

South Gippsland Water

1300 851 636

www.sgwater.com.au

Action Plan

A list of priority actions for this supply system prior to the next update of the Urban Water Strategy is presented below. Further information on actions can be found in the Urban Water Strategy published in 2017 and Water Plan 3 publications on our website. The next phase of our Water Plan and Pricing Review is currently underway.

Action Name	Timing
Demand management	Ongoing
Reduce leaks and wastage	Ongoing
Update water security outlook	Every November

The information provided in this water security outlook is intended as a guide only. An update will be issued if conditions change during the outlook period.