

Lance Creek Water Supply System

Lance Creek Water Supply System supplies water to the townships of:

- Wonthaggi
- Cape Paterson
- Inverloch
- Korumburra
- Poowong
- Loch
- Nyora

The Lance Creek Supply System includes the following water sources:

- Lance Creek Reservoir: 4,200ML capacity
- Melbourne Supply System: 1,000 ML entitlement



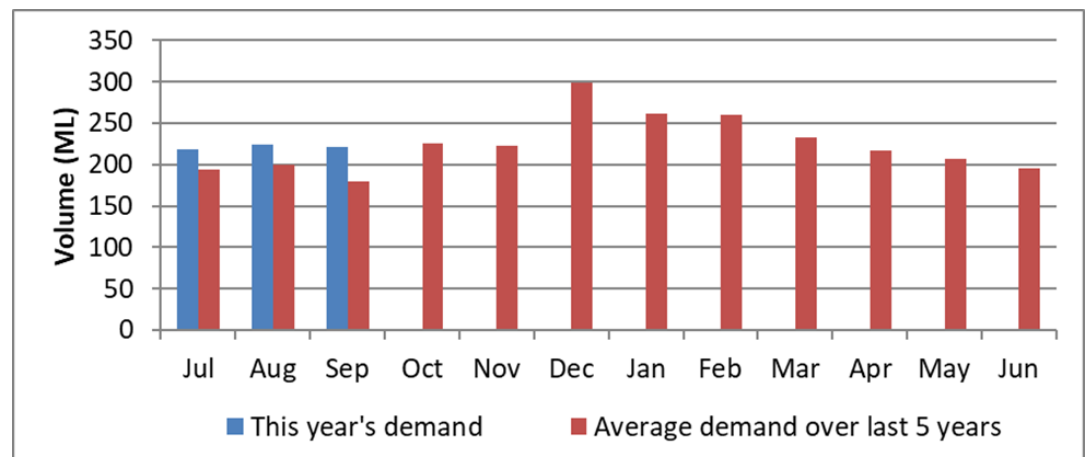
Water Supply Information

Water resources held by South Gippsland Water for the Lance Creek Water Supply System are shown below. Currently, 18% of the available annual entitlement has been used from Lance Creek Reservoir over the year to date (Jul-Oct 2020), and less than 1% of the Melbourne Supply System entitlement. These entitlements are a legal right to access water, subject to availability.

Water Component	Maximum Annual Entitlement	Volume Extracted 2020-21	Volume Remaining 2020-21
Lance Creek Reservoir	3,800 ML	687 ML	3,113 ML
Melbourne Supply System	1,000 ML	6 ML	2,279 ML (including carry over)

Water Consumption

Water consumption for the Lance Creek Water Supply System in the year to date has been above the average demand over the last five years. It is expected that the demand will be closer to the average demand throughout the rest of the year.



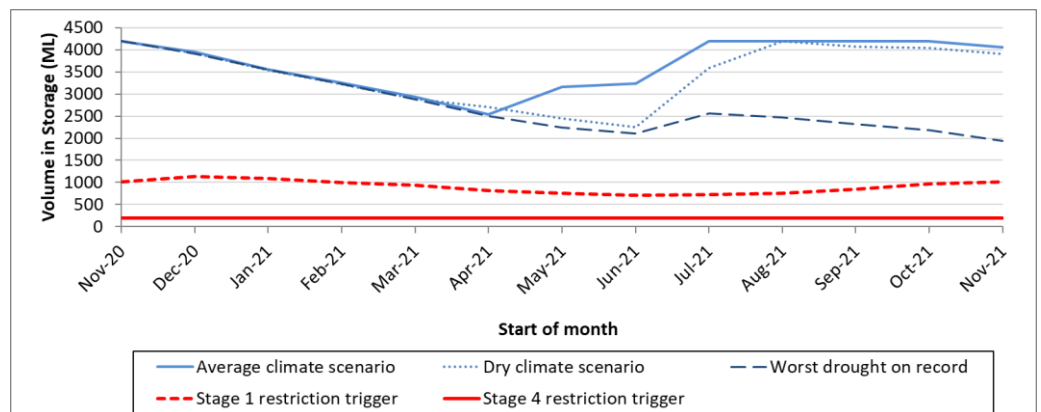
Climate Conditions

Forecast climate conditions for the coming three months have considered the Bureau of Meteorology’s seasonal climate forecast for the region and local climate conditions in the year to date. Winter/spring rainfall in the year to date has been below the long-term average, however the Bureau’s climate outlook indicates that rainfall over the next three months is likely to be above the long-term average. Air temperature is forecast over the next three months to be greater than the long-term average for this time of year, and this trend is expected to continue beyond this period. After taking these factors into account, South Gippsland Water is forecasting on the basis of an average climate scenario, which is characterised by streamflows into Lance Creek Reservoir that are close to long-term average values.

Chance of Exceeding Median Rainfall	Chance of Exceeding Median Maximum Temperature	This Year’s Spring Rainfall	Likely Outlook Scenario
70-75%	Greater than 80%	Below average	Average

Urban Water Restrictions Outlook

The volume in storage outlook for Lance Creek Reservoir for the period November 2020 to November 2021 indicates that storage levels are expected to remain high relative to water restriction triggers over the coming year. This storage outlook includes demands for the towns of Korumburra, Poowong, Loch and Nyora that were connected to the Lance Creek System in 2019.



Based on the volume in storage outlook and the Bureau of Meteorology climate forecast, no water restrictions are anticipated for the remainder of the year at the current time. South Gippsland Water’s Permanent Water Savings Plan applies to all customers over the outlook period.

Climate Scenario	Outlook		
	1 Jan 2021	1 Apr 2021	1 Jul 2021
Wet	PWSP	PWSP	PWSP
Average	PWSP	PWSP	PWSP
Dry	PWSP	PWSP	PWSP

PWSP Permanent Water Savings Plan

Further Information:

- Lance Creek Reservoir was 100% full at the end of October.
- Volumes shown in the storage outlook are start of month values in megalitres (ML), where 1 ML is equivalent to 1 million litres (or roughly one Olympic sized swimming pool).

Action Plan

A list of priority actions for this supply system is presented below. Further information on actions can be found in the Urban Water Strategy published in 2017 and Water Plan 3 publications on our website. The next phase of our Urban Water Strategy, Water Plan and Pricing Review are currently underway.

Action Name	Timing
Demand management	Ongoing
Reduce leaks and wastage	Ongoing
Update water security outlook	Every November

The information provided in this water security outlook is intended as a guide only. An update will be issued if conditions change during the outlook period.