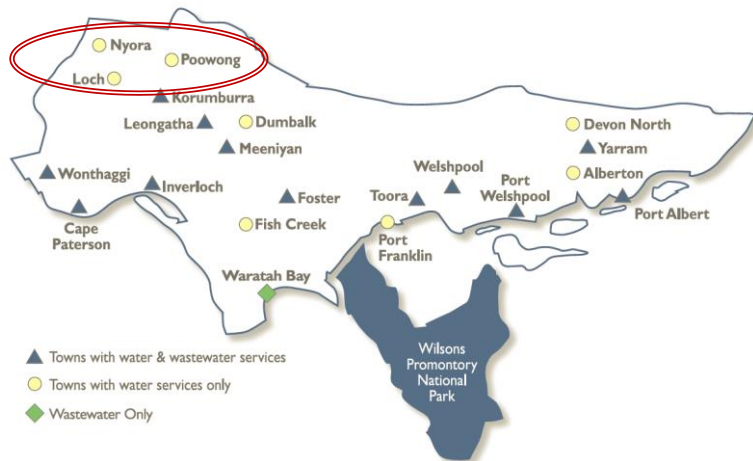


## Little Bass Water Supply System



The Little Bass Water Supply System supplies water to the townships of:

- Poowong
- Loch
- Nyora

These towns have been recently connected to the Lance Creek system, receiving its water from Lance Creek Reservoir which has a capacity of 4,200 ML and the Melbourne Bulk Entitlement.

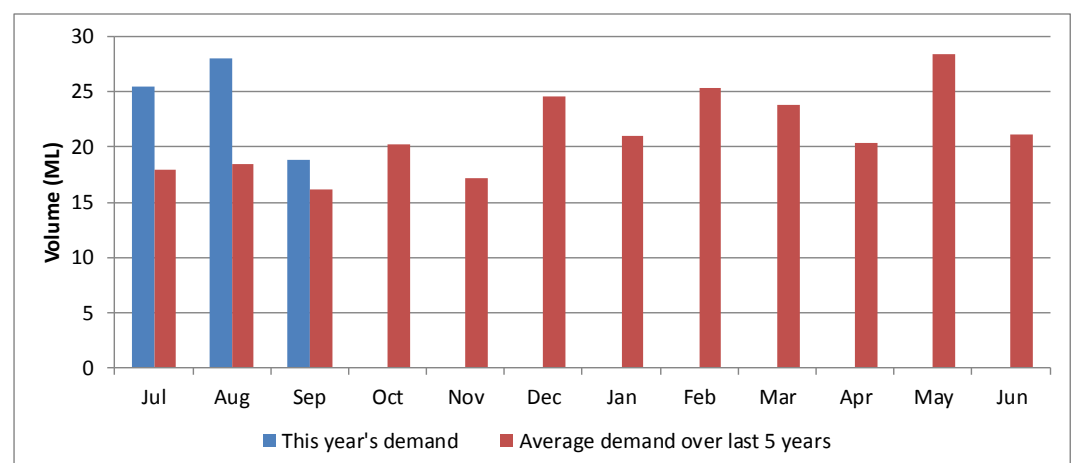
### Water Supply Information

Water resources held by South Gippsland Water for the Little Bass Water Supply System are shown below. Only 17% of the available annual entitlement from the Little Bass River has been used in the current year to date (Jul-Oct 2018). It is unlikely that the remaining Bulk Entitlement volume will be used due to connection to the Lance Creek system. This entitlement is a legal right to access water, subject to availability.

Water Component	Maximum Annual Entitlement	Volume Extracted 2018-19	Volume Remaining 2018-19
Little Bass River	420 ML	72ML	348 ML

### Water Consumption

Monthly water consumption for the Little Bass Water Supply System in the year to date has been higher than the average demand over the last five years, with the demand in July and August substantially higher than the long-term average. Water use by major customers has been higher than this time last year, with the rate of consumption approximately 161% of the 5 year average consumption.



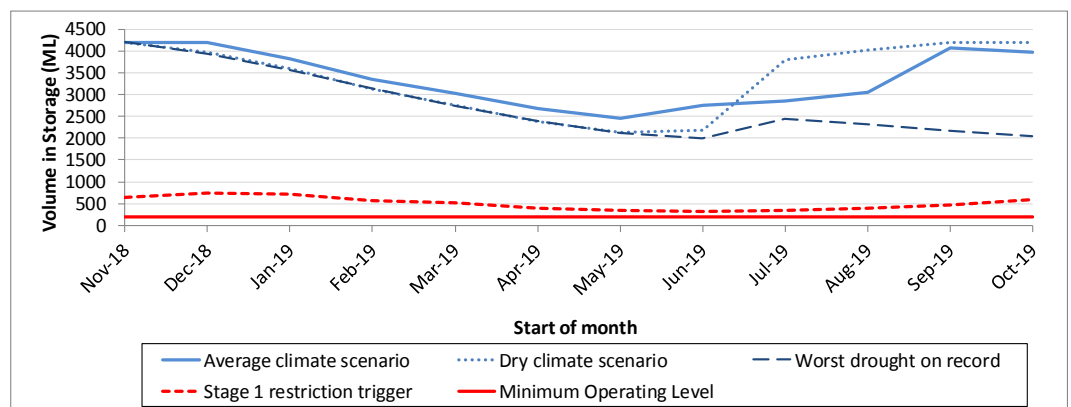
## Climate Conditions

Forecast climate conditions for the coming three months have considered the Bureau of Meteorology’s seasonal climate forecast for the region and local climate conditions in the year to date. The Bureau’s climate outlook indicates that rainfall over the next three months is likely to be lower than the long-term average. Winter/spring rainfall in the year to date has been below average. Air temperature is forecast over the next three months to be higher than the long-term average for this time of year. After taking these factors into account, South Gippsland Water is forecasting on the basis of a dry climate scenario, which is characterised by streamflows into the Little Bass Reservoir that are below the long-term average values.

Chance of Exceeding Median Rainfall	Chance of Exceeding Median Maximum Temperature	This Year’s Spring Rainfall	Likely Outlook Scenario
35-40%	60-65%	Dry	Dry

## Urban Water Restrictions Outlook

The volume in storage outlook for the Little Bass Water Supply System for the period November 2017 to October 2018 indicates that storage levels are expected to remain above water restriction triggers over the coming year under the anticipated dry climate scenario.



Based on the volume in storage outlook and the Bureau of Meteorology climate forecast, no water restrictions are anticipated for the remainder of the year at the current time, particularly now the system is connected to Lance Creek. South Gippsland Water’s Permanent Water Savings Plan applies to all customers over the outlook period.

Climate Scenario	Outlook						
	1 Dec 2018	1 Jan 2019	1 Feb 2019	1 Mar 2019	1 Apr 2019	1 May 2019	1 Jun 2019
Wet	PWSP	PWSP	PWSP	PWSP	PWSP	PWSP	PWSP
Average	PWSP	PWSP	PWSP	PWSP	PWSP	PWSP	PWSP
Dry	PWSP	PWSP	PWSP	PWSP	PWSP	PWSP	PWSP

PWSP Permanent Water Savings Plan

### Further Information:

- The Lance Creek Reservoir was 99.5% full at the end of October.
- Volumes shown in the storage outlook are start of month values in megalitres (ML), where 1 ML is equivalent to 1 million litres (or roughly one Olympic sized swimming pool).

## Action Plan

A list of priority actions for this supply system prior is presented below. Further information on actions can be found in the previous Urban Water Strategy published in 2017 and Water Plan 3 publications on our website. The next phase of our Water Plan and Pricing Review is currently underway.

Action Name	Timing
Demand management	Ongoing
Reduce leaks and wastage	Ongoing
Update water security outlook	Every November
Pipeline connection between Lance Creek Reservoir and Korumburra (and extending to Poowong) has been designed. Construction has been undertaken over the last 12 months. Anticipated project commissioning in November 2018.	November 2018

The information provided in this water security outlook is intended as a guide only. An update will be issued if conditions change during the outlook period.