

## Information sheet

# WASHING MACHINES

At savewater!®, we recommend front loading washing machines as they use less water. Here are a few tips to help you choose a washing machine that suits your budget, saves water and is kind to the environment.

### Front loaders vs top loaders?

In a test of 18 washing machines by Choice Magazine (March 2007), the top four machines in a rating of overall performance (irrespective of size) were all front loaders. The best overall performer in each size category was a front loader.

### How's it going to wash?

Front loaders are gentler on the clothes than top loaders. They have higher spin speeds resulting in less moisture in the clothes on completion. This shortens drying time and minimizes the use of a tumble dryer. In terms of dirt removal or rinse performance, neither type has an advantage but front loaders offer more temperature and wash options.

### I want to save water and energy...

One of the biggest advantages of front loaders is that they use significantly less water than a top loader, up to 70% less in some cases or 36,000 litres per year. They also use less detergent and less energy. This reduces greenhouse gases making front loaders more environmentally friendly than top loaders.

### How easy is it to load washing?

Front loaders on the floor require bending to load and unload, unlike top loaders which could cause issues for those with back problems. However, these problems are reduced if front loaders are placed on pedestals or in a purpose built cabinet.



### Saving space...

Front loaders are very effective space savers. A dryer can easily be mounted on top of the machine without hindering its operation.

## Can I add clothes during the wash cycle?

Most front loaders cannot be opened once the cycle starts. However, some newer models are able to overcome this problem. Washing can be added to top loaders at any point of the cycle.

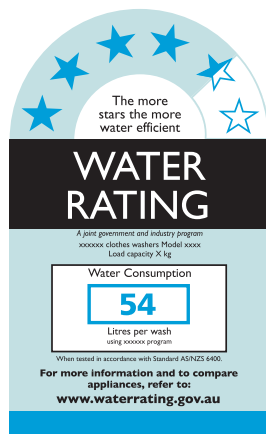
## How long does it take to wash?

Front loaders generally take longer to complete a cycle than top loaders, sometimes up to 40 minutes more.

## How much do they cost?

Top loaders are generally cheaper than front loaders. For a machine of equivalent size and quality, the difference could be about \$200. However, the price is reducing as a result of more front loaders coming on to the market.

## What to look for before buying a front or top loader



By law, all washing machines must carry a label which gives a star rating for the machine's water efficiency. The more stars, the less water the machine uses per wash. The label also provides water consumption in litres for each cold and warm wash. All machines will also display a label for energy efficiency. The more stars displayed, the less energy the machine uses.

Energy consumption figures may also be provided for warm and cold wash. To minimize your total running costs, you should select a model within your budget that is high in both water and energy efficiency.

To save water and energy, always run your washing machine on a full load. Washing in cold water saves energy and doesn't normally affect the quality of the wash.

Benefits of front loading washing machines:

- ✓ gentler on clothes
- ✓ use less water and detergent
- ✓ use less energy if washed in warm water
- ✓ cheaper running costs
- ✓ higher spin speeds saves on drying
- ✓ can save space
- ✓ offer more temperature and wash options
- ✓ many new models available

Before purchasing a front loading washing machine, it is worth remembering that the wash cycles are longer, the machines are generally more expensive to buy, you can't interrupt the wash cycle and you may need to bend to load/unload the washing.

## Should I upgrade my washing machine straight away?

You should only replace your washing machine when you are ready to upgrade. In the meantime, you can save water with your washing machine by recycling the rinse water onto your garden. Make sure you follow the grey water guidelines in your area before you do this.

## What detergents should I use?



Always look for detergents with low or no phosphorus & sodium. Liquids are usually better than powders. There are new laundry cleaning products available, which allow you to wash without using traditional

detergents, such as laundry discs & balls which contain natural ingredients.

Disclaimer: While savewater!® has attempted to ensure that all the above information is accurate, it cannot accept responsibility for any loss you may suffer by relying on it.

© savewater!® Alliance, October 2009

## Further information

For further information visit [www.savewater.com.au](http://www.savewater.com.au) or contact your water provider.