
Storage and Rainfall Update

STAGE 1 WATER RESTRICTIONS LIFTED FOR KORUMBURRA

Rainfall was recorded at South Gippsland Water's storages from **29th July to 4th August 2017**. Lance Creek 15mm, Ruby Creek 16mm, Coalition Creek 20mm, Deep Creek 19mm, Little Bass 26mm and Battery Creek 13mm.

Even though catchments did not receive as much rainfall last week as in previous weeks, water levels in all storages increased, indicating that catchments are saturated enough to yield more run-off.

Of note, storage levels at Coalition Creek and Little Bass water supply systems increased by 9% and 17% respectively.

Customers in Korumburra are advised that Stage 1 Water Restrictions, in place for the Coalition Creek system since late March, will be lifted on Thursday 10th August 2017.

While all storages are slowly replenishing, significantly more winter rainfall is needed to prepare water storages for spring.

Climate and catchment conditions being experienced this season are similar to those of 2007 when low winter rainfall and a dry spring led to low water storage levels as the region moved into summer. South Gippsland Water will keep a close watch on weather forecasting and storage and rainfall modelling in order to respond quickly and effectively to climate and water demand variables that might impact on storage levels in the coming months.

In the meantime, Permanent Water Saving Rules are in place across the state to help all Victorians maintain a common-sense approach to water use. The rules are in force permanently and are separate from any other water restrictions South Gippsland Water may need to impose from time to time.

Simple water saving practices customers can activate at home include:

- Using a half flush when flushing the toilet
- Fixing any leaking or dripping taps
- Ensuring hoses are fitted with a trigger nozzle and free of leaks
- Installing a water saving shower head
- Only running washing machine and dish washers when there is a full load to be washed
- Limiting shower time to four minutes
- Installing a pool cover
- Planting water wise garden plants and using mulch to hold moisture in garden beds.

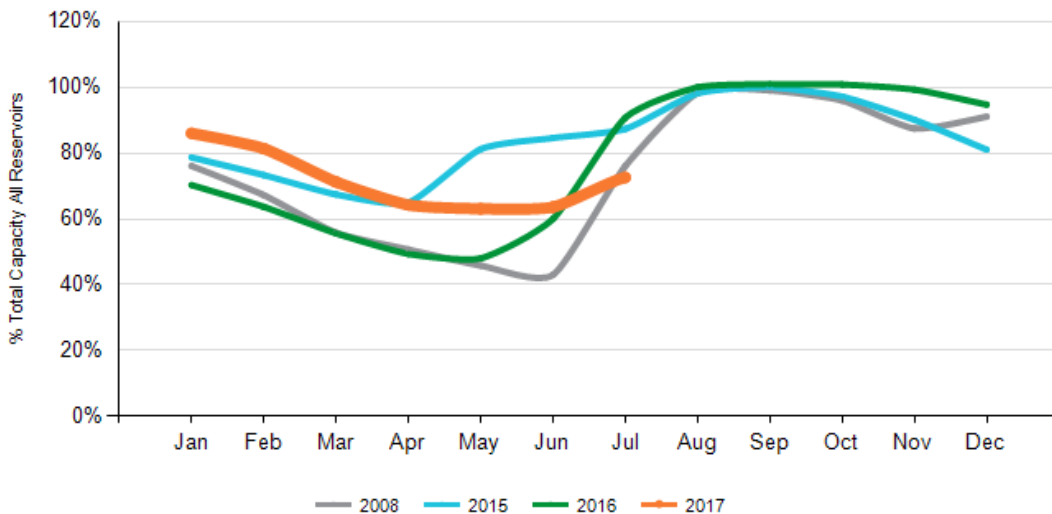
Information about Permanent Water Saving Rules can be found in the Services section of South Gippsland Water's website www.sgwater.com.au. For smart water advice and handy hints to help you save water visit www.smartwatermark.org/Victoria/

Any customers who have questions or concerns regarding their water supply can contact South Gippsland Water's friendly Customer Service Team on **1300 851 636**.

Reservoir	Major towns supplied	Capacity level %	Current Status
Lance Creek	Wonthaggi, Inverloch and Cape Paterson	86	Permanent Water Saving Measures
Ruby Creek	Leongatha and surrounds	52	Permanent Water Saving Measures
Coalition Creek	Korumburra and surrounds	84	Stage 1 Water Restrictions
Foster Dam – Deep Creek	Foster area	100	Permanent Water Saving Measures
Little Bass	Poowong, Nyora and Loch	97	Permanent Water Saving Measures
Battery Creek	Fish Creek	100	Permanent Water Saving Measures

River Systems	Major Town Supplied	Current Status
Tarwin	Meeniyan, Dumbalk	Permanent Water Saving Measures
Agnes	Welshpool, Port Welshpool, Toora, Port Franklin	Permanent Water Saving Measures
Tarra	Yarram, Alberton, Port Albert	Permanent Water Saving Measures

All Reservoirs



Source – [South Gippsland Water website](#)