

Information Sheet

HOW TO READ YOUR WATER METER

It is recommended to regularly check your meter to determine and monitor your daily usage and rule out potential leaks on your property.

Where is my water meter?

It is important to know where your meter is located so you can turn off water supply if an emergency such as a burst water pipe occurs.

House: the water meter is usually located towards the street at the front of the property protected by a cover. You may need to remove the cover before taking a reading.

Flat: in large buildings, the water meter can be found in the utilities cupboard on each floor, or at the front of the property in smaller buildings.

Contact South Gippsland Water if you need assistance locating your water meter.

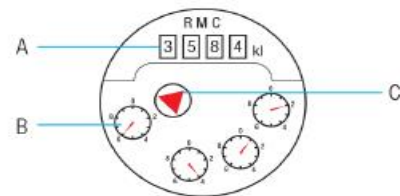
Checking for leaks

1. Take a meter reading after the last person has gone to the toilet or brushed their teeth at night.
2. Take a second reading before anyone uses water in the morning.

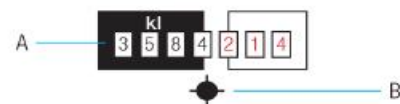
If no one has used any water overnight and the reading has changed, then you know there is a leak. Contact a plumber to locate and repair the leak.



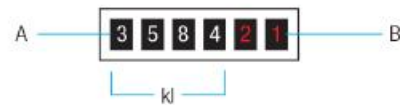
- A Black numbers on a white background register kilolitres.
- B White numbers on red background register hundreds of litres, tens of litres, litres and if there is a fourth red dial tenths of litres.



- A Black numbers on white background (4 digits) register kilolitres.
- B Four 'clock' dials at bottom of meter, register starting from right, hundreds of litres, tens of litres, litres and tenths of litres.
- C 'Tell tale' detects small usage and leaks.



- A Black numbers on white background register kilolitres. Red numbers on white background register hundreds of litres, tens of litres and litres.
- B 'Tell tale' detects small usage and leaks (twenty revolutions per litre).



- A White numbers on black background register kilolitres.
- B Red numbers on black background register hundreds of litres and tens of litres.

Information Sheet

HOW TO READ YOUR WATER METER

Monitor your water usage

Your water meter provides a quick and easy means of monitoring your household water consumption.

1. Take initial meter reading, also noting down the date and time.
2. Take a second reading on the eighth day close to the time that the original reading was taken.
3. Calculate the weekly consumption by deducting the original reading from the second reading.
4. Divide by the number of days between readings (7 in this case) to calculate the daily household usage.



To determine litres per person a day, divide the last figure by the number of people in the household. Some regions have implemented a daily water usage target of 140 to 155 litres per person a day.

Interesting Fact

The two likely high water users are showerheads (averaging 18 litres per minute) and washing machine (up to 140 litres for a top loader wash).

Date meter reading taken	Meter reading (kl)	Days between readings	Water consumption (kl)	Average daily consumption (kl)