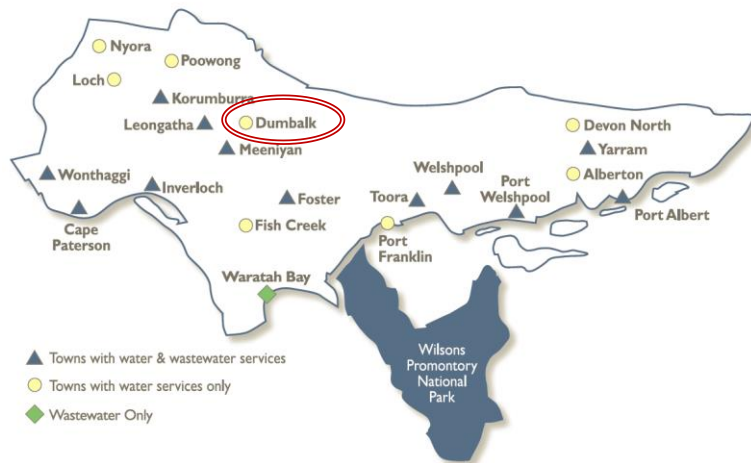


## Dumbalk Water Supply System

Dumbalk is supplied from the Tarwin River East Branch.

After diversion from the river, water is stored in a small water storage and water tower. This small water storage helps South Gippsland Water to maintain a good quality water supply.



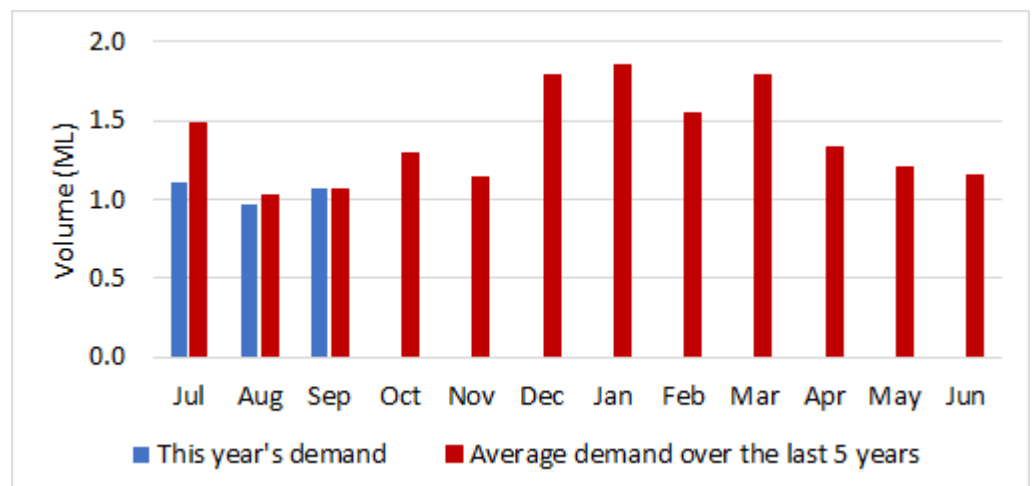
## Water Supply Information

Water resources held by South Gippsland Water for the Dumbalk Water Supply System are shown below. Only 3% of the available annual entitlement has been used from the river in the current year to date (Jul-Sep 2023). This entitlement is a legal right to access water, subject to availability.

Water Component	Maximum Annual Entitlement	Volume Extracted 2023-24	Volume Remaining 2023-24
Tarwin River at Dumbalk	100 ML	3 ML	97 ML

## Water Consumption

Monthly water consumption for the Dumbalk Water Supply System in the year to date was below average in July and average in August and September. It is expected that demand will be close to the historical average for the remainder of the year.



South Gippsland Water

1300 851 636

[www.sgwater.com.au](http://www.sgwater.com.au)

## Further Information:

- The most recent records for the Tarwin River East Branch at Dumbalk show that it was flowing at an average of 399 ML/d during October. This is well above SGW's restriction trigger of 1 ML/d.
- Unregulated river flows are difficult to forecast and because of this SGW has only forecast the next 3 months. The graph is formatted to highlight low flow behaviour.
- Units are in megalitres per day (ML/d), where 1 ML is equivalent to 1 million litres (or roughly 40% of an Olympic sized swimming pool).

South Gippsland Water

1300 851 636

[www.sgwater.com.au](http://www.sgwater.com.au)

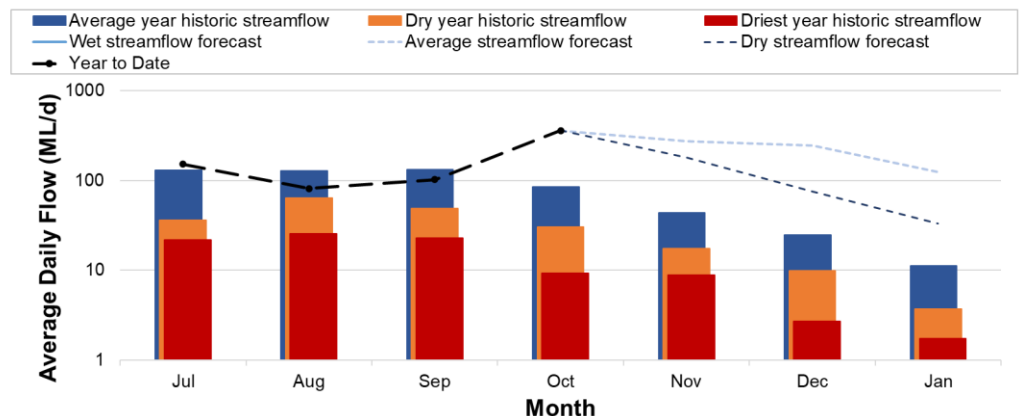
## Climate Conditions

Forecast climate conditions for the coming three months have considered the Bureau of Meteorology's seasonal climate forecast for the region and local climate conditions in the year to date. Winter/spring rainfall in the year to date has been similar to long-term average, and the Bureau's climate outlook indicates that the next three months are likely to be slightly drier than usual. Air temperature is forecast over the next three months to be warmer than usual for this time of year, and this trend is expected to continue beyond this period. After taking these factors into account, South Gippsland Water is forecasting on the basis of a dry climate scenario.

Chance of Exceeding Median Rainfall	Chance of Exceeding Median Maximum Temperature	This Year's Winter/Spring Rainfall	Likely Outlook Scenario
40-45%	Greater than 80%	Average	Dry

## Streamflow Outlook

Streamflow in the Tarwin River is naturally highly variable. For the year to date, streamflow has generally been at or above the long-term average. Whilst precisely forecasting streamflow conditions is difficult, streamflow for the outlook period is currently expected to remain above the historical average even if slightly drier conditions occur over the coming months. Water restrictions have previously only been enacted at Dumbalk during extreme drought. River flows are expected to remain above SGW's 1 ML/d trigger for restrictions over the outlook period.



## Urban Water Restrictions Outlook

Based on the recent streamflow record, average demands for water expected for the next three months, the Bureau of Meteorology climate forecast and SGW's daily streamflow forecast, no water restrictions are anticipated over the outlook period at the current time. South Gippsland Water's Permanent Water Savings Plan applies to all customers over the outlook period.

Climate Scenario	Outlook		
	1 Dec 2023	1 Jan 2024	1 Feb 2024
Wet	PWSP	PWSP	PWSP
Average	PWSP	PWSP	PWSP
Dry	PWSP	PWSP	PWSP

PWSP

Permanent Water Savings Plan

## Action Plan

A list of priority actions for this supply system prior to the next update of the Urban Water Strategy in 2027 is presented below. Further information on actions can be found in our [2022 Urban Water Strategy](#) and our [Price Submission 2020-2023](#) publication on our website. Victoria's [permanent water savings rules](#) are always in place in South Gippsland, saving water on an ongoing basis. For additional tips about how to save water see our [smart water advice](#).

Action Name	Timing
Water awareness and efficiency programs	Ongoing
Leak reduction	Ongoing
Update water security outlook	Every November
Planning for long term options as per the Urban Water Strategy	2022-2027

The information provided in this water security outlook is intended as a guide only. An update will be issued if conditions change during the outlook period.