

Fish Creek Water Supply System



The town of Fish Creek receives its water supply from Battery Creek Reservoir, located on Battery Creek. The reservoir has a capacity of 123 ML and allows water harvested in winter/spring to be stored and then supplied to customers in summer/autumn.

The Fish Creek water supply system also provides water supply to rural customers, who account for approximately 40% of total supply system demand in an average year.

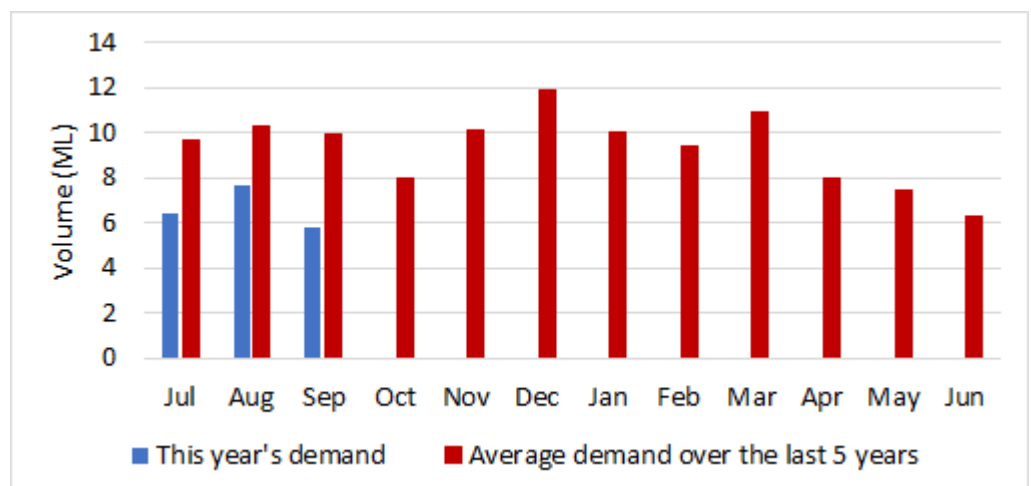
Water Supply Information

Water resources held by South Gippsland Water for the Fish Creek Water Supply System are shown below. Approximately 8% of the available annual entitlement has been used from Battery Creek Reservoir in the current year to date (Jul-Sep 2023). This entitlement is a legal right to access water, subject to availability.

Water Component	Maximum Annual Entitlement	Volume Extracted 2023-24	Volume Remaining 2023-24
Battery Creek Reservoir	251 ML	20 ML	231 ML

Water Consumption

Monthly water consumption for the Fish Creek Water Supply System in the year to date has been below the average demand over the last five years. It is expected that demand will be close to the historical average for the remainder of the year.



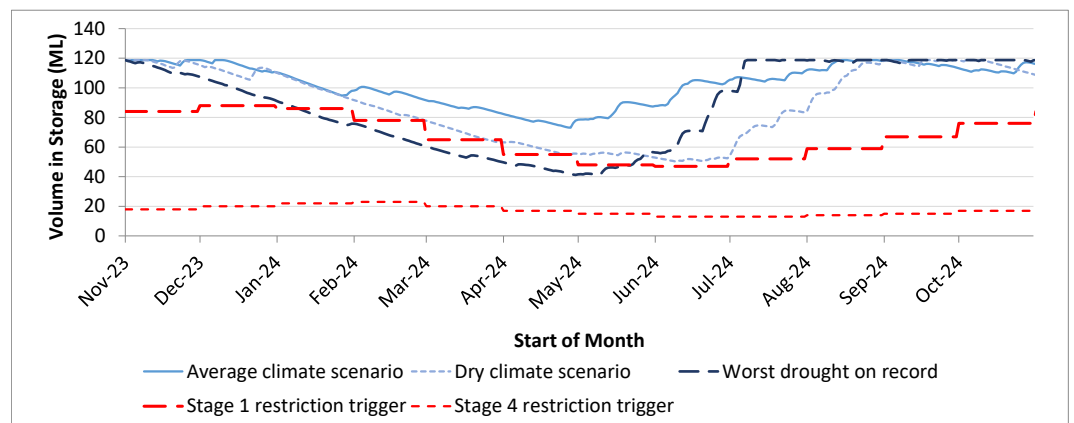
Climate Conditions

Forecast climate conditions for the coming three months have considered the Bureau of Meteorology's seasonal climate forecast for the region and local climate conditions in the year to date. Winter/spring rainfall in the year to date has been similar to long-term average, and the Bureau's climate outlook indicates that the next three months are likely to be slightly drier than usual. Air temperature over the next three months is forecast to be warmer than usual for this time of year, and this trend is expected to continue beyond this period. After taking these factors into account, South Gippsland Water is forecasting on the basis of a dry climate scenario.

Chance of Exceeding Median Rainfall	Chance of Exceeding Median Maximum Temperature	This Year's Winter/Spring Rainfall	Likely Outlook Scenario
40-45%	Greater than 80%	Average	Dry

Urban Water Restrictions Outlook

The volume in storage outlook for Battery Creek Reservoir for the period November 2023 to October 2024 indicates that storage levels could reach water restriction triggers over the coming year under the anticipated dry climate scenario.



Based on the volume in storage outlook and the Bureau of Meteorology climate forecast, restrictions are possible in late summer and autumn. However, it should be noted that Fish Creek (Battery Creek Storage) is a small system and can change quickly, both in response to rainfall, and in the event of sustained dry conditions for only a few months. South Gippsland Water's Permanent Water Savings Plan applies to all customers over the outlook period.

Climate Scenario	Outlook		
	1 Jan 2024	1 Apr 2024	1 Jul 2024
Wet	PWSP	PWSP	PWSP
Average	PWSP	PWSP	PWSP
Dry	PWSP	Stage 1	PWSP

PWSP

Permanent Water Savings Plan

Further Information:

- Battery Creek Reservoir was 100% full at the end of October.
- Volumes shown in the storage outlook are start of month values in megalitres (ML), where 1 ML is equivalent to 1 million litres (or roughly 40% of an Olympic sized swimming pool).

South Gippsland Water

1300 851 636

www.sgwater.com.au

Action Plan

A list of priority actions for this supply system prior to the next update of the Urban Water Strategy in 2027 is presented below. Further information on actions can be found in our [2022 Urban Water Strategy](#) and our [Price Submission 2020-2023](#) publication on our website. Victoria's [permanent water savings rules](#) are always in place in South Gippsland, saving water on an ongoing basis. For additional tips about how to save water see our [smart water advice](#).

Action Name	Timing
Water awareness and efficiency programs	Ongoing
Leak reduction	Ongoing
Reuse opportunities	Ongoing
Update water security outlook	Every November
Planning for long term options as per the Urban Water Strategy	2022-2027

The information provided in this water security outlook is intended as a guide only. An update will be issued if conditions change during the outlook period.