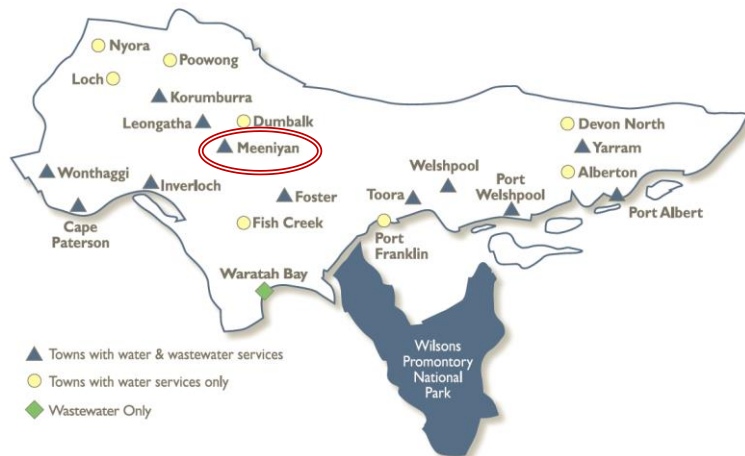


Meeniyian Water Supply System

Meeniyian is supplied from the Tarwin River.

After diversion from the river, water is stored in a raw water basin prior to treatment and storage in a water tower. This water tower helps South Gippsland Water to maintain supply during peak demand periods in the morning and evening.



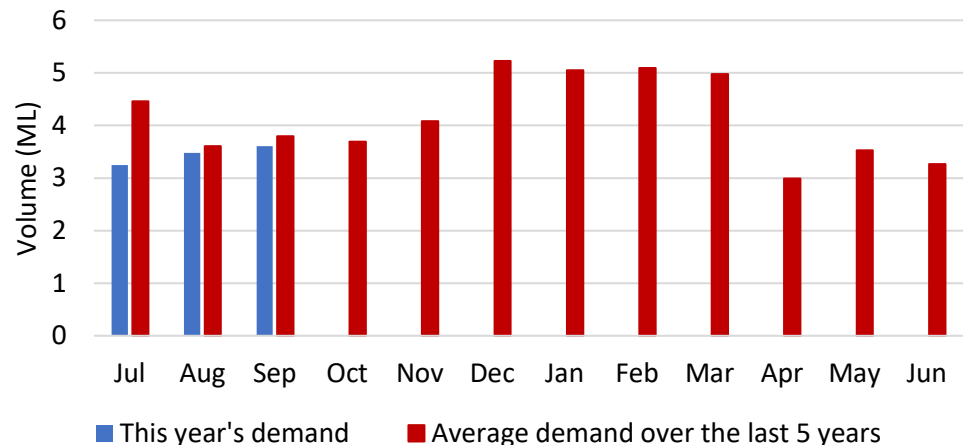
Water Supply Information

Water resources held by South Gippsland Water for the Meeniyian Water Supply System are shown below. Only 5% of the available annual entitlement has been used from the river in the current year to date (Jul-Sep 2023). This entitlement is a legal right to access water, subject to availability.

Water Component	Maximum Annual Entitlement	Volume Extracted 2023-24	Volume Remaining 2023-24
Tarwin River at Meeniyian	200 ML	10 ML	190 ML

Water Consumption

Monthly water consumption for the Meeniyian Water Supply System in the year to date has been below the average demand over the last five years. Water consumption is expected to remain close to the historical average for the remainder of the year.



Further Information:

- The most recent records for the Tarwin River at Meeniyar show that it was flowing at an average of 2,237 ML/d during October. This is well above SGW's restriction trigger of 5 ML/d and is in the 5th percentile of flows recorded
- Unregulated river flows are difficult to forecast as because of this SGW has only forecast the next 3 months. The graph is formatted to highlight low flow behaviour.
- Units are in megalitres per day (ML/d), where 1 ML is equivalent to 1 million litres (or roughly 40% of an Olympic sized swimming pool).

South Gippsland Water

1300 851 636

www.sgwater.com.au

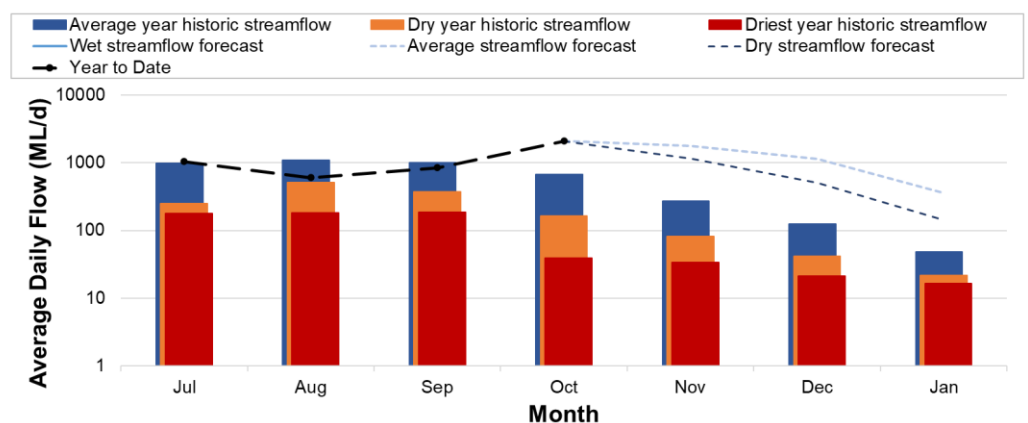
Climate Conditions

Forecast climate conditions for the coming three months have considered the Bureau of Meteorology's seasonal climate forecast for the region and local climate conditions in the year to date. Winter/spring rainfall in the year to date has been similar to long-term average, and the Bureau's climate outlook indicates that the next three months are likely to be slightly drier than usual. Air temperature over the next three months is forecast to be warmer than usual for this time of year, and this trend is expected to continue beyond this period. After taking these factors into account, South Gippsland Water is forecasting on the basis of a dry climate scenario.

Chance of Exceeding Median Rainfall	Chance of Exceeding Median Maximum Temperature	This Year's Winter/Spring Rainfall	Likely Outlook Scenario
40-45%	Greater than 80%	Average	Dry

Streamflow Outlook

Streamflow in the Tarwin River is naturally highly variable. For the year to date, streamflow has been above the long-term average. Water restrictions have previously only been enacted during extreme drought. Whilst precisely forecasting streamflow conditions is difficult, streamflow for the outlook period is currently expected to remain close to the long term average even if the dry climate conditions eventuate as expected. River flows are expected to remain above the 5 ML/d trigger for restrictions.



Urban Water Restrictions Outlook

Based on the recent streamflow record, the Bureau of Meteorology climate forecast and SGW's daily streamflow forecast, no water restrictions are anticipated over the outlook period at the current time. South Gippsland Water's Permanent Water Savings Plan applies to all customers over the outlook period.

Climate Scenario	Outlook		
	1 Dec 2023	1 Jan 2024	1 Feb 2024
Wet	PWSP	PWSP	PWSP
Average	PWSP	PWSP	PWSP
Dry	PWSP	PWSP	PWSP

PWSP

Permanent Water Savings Plan

Action Plan

A list of priority actions for this supply system prior to the next update of the Urban Water Strategy in 2027 is presented below. Further information on actions can be found in our [2022 Urban Water Strategy](#) and our [Price Submission 2020-2023](#) publication on our website. Victoria's [permanent water savings rules](#) are always in place in South Gippsland, saving water on an ongoing basis. For additional tips about how to save water see our [smart water advice](#).

Action Name	Timing
Water awareness and efficiency programs	Ongoing
Leak reduction	Ongoing
Reuse opportunities	Ongoing
Update water security outlook	Every November
Planning for long term options as per the Urban Water Strategy	2022-2027

The information provided in this water security outlook is intended as a guide only. An update will be issued if conditions change during the outlook period.