

Project Progress

JUNE - JULY 2018

LANCE CREEK TO POOWONG



WATER SECURITY REPLACES WATER RESTRICTIONS

A drier than average autumn has resulted in low inflows to the Coalition Creek and Little Bass water supply systems. Until recent weeks, storage levels gradually decreased causing Korumburra to be placed on Stage 3 water restrictions and the Poowong, Loch and Nyora system being very closely monitored.

Construction of the Lance Creek Water Connection is a key component in South Gippsland Water's long-term strategy to secure water supplies for the region.

The pipeline will supply water from the Lance Creek Water Treatment Plant which will draw from the Lance Creek Reservoir and has connections to the Melbourne Water Supply System and the Victorian Desalination Plant.

The combination of these systems will secure water supply for the area, making staged water restrictions for these townships a thing of the past. This will provide a dependable environment for community development, economic growth and future investment.

To manage the processing and distribution of this larger volume of water, and to enable it to be blended and treated effectively, a new pump station is being built at the Lance Creek Water Treatment Plant and treatment processes and systems are being upgraded.

A significant change for Korumburra, Poowong, Loch and Nyora customers will be the benefit of fluoridated water. The fluoridation of water supply is a requirement of the Victorian Department of Health and Human Services, with the safe and effective addition of fluoride to drinking water regulated by *the Safe Drinking Water Act 2003*.

With the laying of pipeline almost complete, the project moves into its winter schedule allowing for anticipated wetter and colder conditions. Reinstatement works have begun and will be completed in spring.

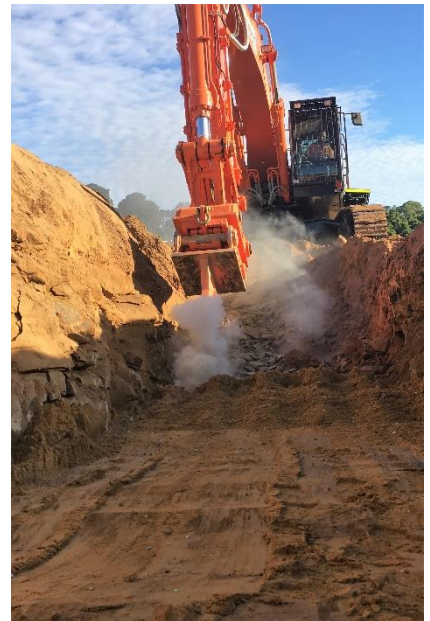


The laying of pipeline on both the Lance Creek to Korumburra and Korumburra to Poowong sections of the project is 95% complete.

“Our most recent milestone was the completion of a final bore through a particularly challenging steep slope just south of the Korumburra Water Treatment Plant. This means that, weather permitting, the completion of the laying of pipe between Lance Creek and Korumburra is not far away.” Philippe du Plessis, South Gippsland Water Managing Director.

PIPELINE - Lance Creek to Korumburra

SUMMARY
➤ 21.7km of construction corridor cleared, graded and fenced
➤ 531 lengths (10.6km) of 560 diameter polyethylene pipe (HDPE) delivered to site – 10.4km installed
➤ 789 lengths (9.7km) of 502 diameter steel pipe delivered to site – 9.7km installed
➤ Total of 20.3km of pipe delivered and 20.1km installed
➤ Pipeline construction work – approximately 95% complete
➤ Pump Station & associated works - approximately 60% complete
➤ Reinstatement works - approximately 90% complete



Above: Trench excavation.
Below: Installation of a scour valve arrangement.

PIPELINE – Korumburra to Poowong

SUMMARY
➤ 8.8km of construction corridor cleared, graded and fenced
➤ 444 lengths (8.8km) of 225 diameter polyethylene pipe (HDPE) delivered and installed
➤ Total of 8.8km of pipe installed
➤ Pipeline construction work – approximately 95% complete
➤ Pump Station - approximately 26% complete
➤ Reinstatement works – 50% complete





PUMP STATION – LANCE CREEK WATER TREATMENT PLANT

The Lance Creek Water Connection project has taken delivery of three 3-tonne pumps, key components in the construction of a new pump station at South Gippsland Water's Lance Creek Water Treatment Plant.

The pump station will transfer water from the Lance Creek Water Treatment Plant, 20km across the hills of Kongwak and Jumbunna, to the clear water storage tank at the Korumburra Water Treatment Plant.

Steep terrain means this section of pipeline has a difference in gradient of 209m from start to finish; the three 220kW pumps will transfer water across this gradient at a rate of 140L/sec.

When the pipeline is complete, an average of 2.6ML of water per day (the volume of an Olympic sized swimming pool) will be pumped from Lance Creek to the Korumburra Water Treatment Plant.

A second pump station (also currently under construction) at Korumburra will then transfer around 800KL per day 9km to the clear water storage basin at the Poowong Water Treatment Plant for supply to Poowong, Loch and Nyora.

*Above: Craning the first of three pumps into position.
Right: Building the pump station around the pumps.*

PRESSURE TESTING – LANCE CREEK TO POOWONG

With the laying of pipe close to completion, a number of tests have been done on sections of pipeline between Lance Creek and Poowong.

At key points along the pipeline, air, scour and isolation valves have been installed to ensure the safe and efficient operation of the system.

Recently, hydrostatic pressure testing on completed sections of the pipeline was carried out. Sections of pipe were pumped full of water to a specified test pressure and then the pressure in the pipe monitored over time.

Pressure in all sections of pipeline tested met specified tolerances.



PROCESSING GREATER VOLUMES OF WATER

On completion of the pipeline project, water distributed by the Lance Creek Water Treatment Plant will be chloraminated and fluoridated to ensure customers are supplied with safe drinking water that meets world-class standards and Department of Health regulations.

Although fluoridation will be new to Korumburra, Poowong, Loch and Nyora, water currently supplied to Wonthaggi, Inverloch and Cape Paterson by the Lance Creek Water Treatment Plant is both fluoridated and chloraminated.

Upgrades to enhance the Lance Creek Water Treatment Plant's capacity to blend, treat and process greater volumes of water are nearing a point where testing can commence. Customers in these towns are advised that they may notice a slight change in the taste and smell of their water over the coming months as these upgraded systems are tested and brought online.

Water Treatment Operators will do their utmost to ensure that the water supplied has minimal noticeable change in taste and smell. As always, water will remain safe to drink throughout the changes at the Lance Creek Water Treatment Plant.

Reminder to Aquarium and Fish Pond Owners

Chlorine and/or chloramine in the water supply is not harmful to land animals or house plants, but certain levels may be toxic to fish.

Before adding tap water to your aquarium or pond, it is important to treat it using water conditioning agents containing a de-chlorinating agent, or by filtration through high-quality granular activated carbon.

REINSTATEMENT OF THE CONSTRUCTION CORRIDOR

With favourable weather over past months, site reinstatement work on properties between Lance Creek and Poowong has progressed well.

The project team and contractors have worked closely with each land owner along the pipeline to ensure that the construction corridor is reinstated to agreed specifications.



*Above: Backfilling pipe trench Korumburra Golf Course.
Below: Re-sewing construction corridor to specifications agreed with land owner.*



