

Region's Water Storage Levels Where They Should Be

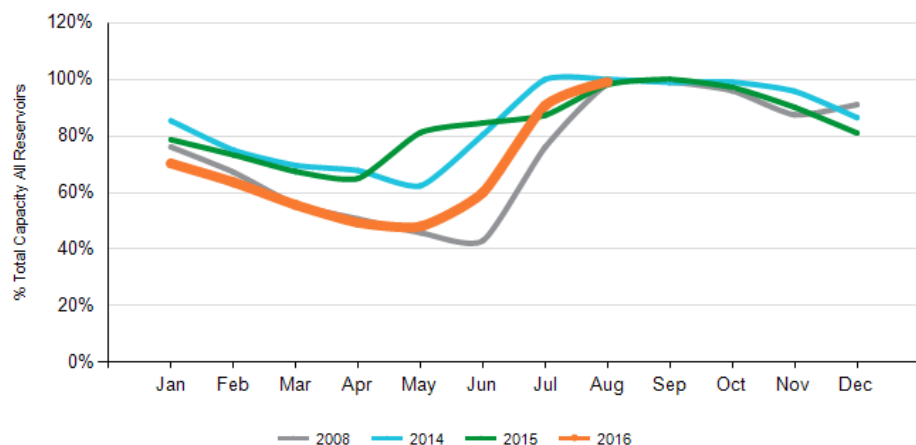
Rainfall was recorded at South Gippsland Water's storages from **6th August 2016 – 12th August 2016**. Lance Creek 6mm, Ruby Creek 8mm, Coalition Creek 9mm, Deep Creek 6mm, Little Bass 7mm and Battery Creek 2mm.

Philippe du Plessis, Managing Director, South Gippsland Water said, "The region's reservoirs are between 96-100% capacity which is exactly where they should be at this time of year."

"Monitoring indicates that, similar to our last significant dry period in 2008, each of our six reservoirs can recover reasonably quickly with consistent rainfall during June, July and August."

Information comparing water storage levels can be found in the Services section of South Gippsland Water's website www.sgwater.com.au.

All Reservoirs



South Gippsland Water encourages customers to always use water wisely. Permanent Water Saving Rules continue to be in place across all Victorian systems and townships.

Reservoir	Major towns supplied	Capacity level %	Current Status
Lance Creek	Wonthaggi, Inverloch and Cape Paterson	100	Permanent Water Saving Measures
Ruby Creek	Leongatha and surrounds	100	Permanent Water Saving Measures
Coalition Creek	Korumburra and surrounds	100	Permanent Water Saving Measures
Foster Dam – Deep Creek	Foster area	96	Permanent Water Saving Measures
Little Bass	Poowong, Nyora and Loch	100	Permanent Water Saving Measures
Battery Creek	Fish Creek	100	Permanent Water Saving Measures

River Systems	Major Town Supplied	Current Status
Tarwin	Meeniyan, Dumbalk	Permanent Water Saving Measures
Agnes	Welshpool, Port Welshpool, Toora, Port Franklin	Permanent Water Saving Measures
Tarra	Yarram, Alberton, Port Albert	Permanent Water Saving Measures